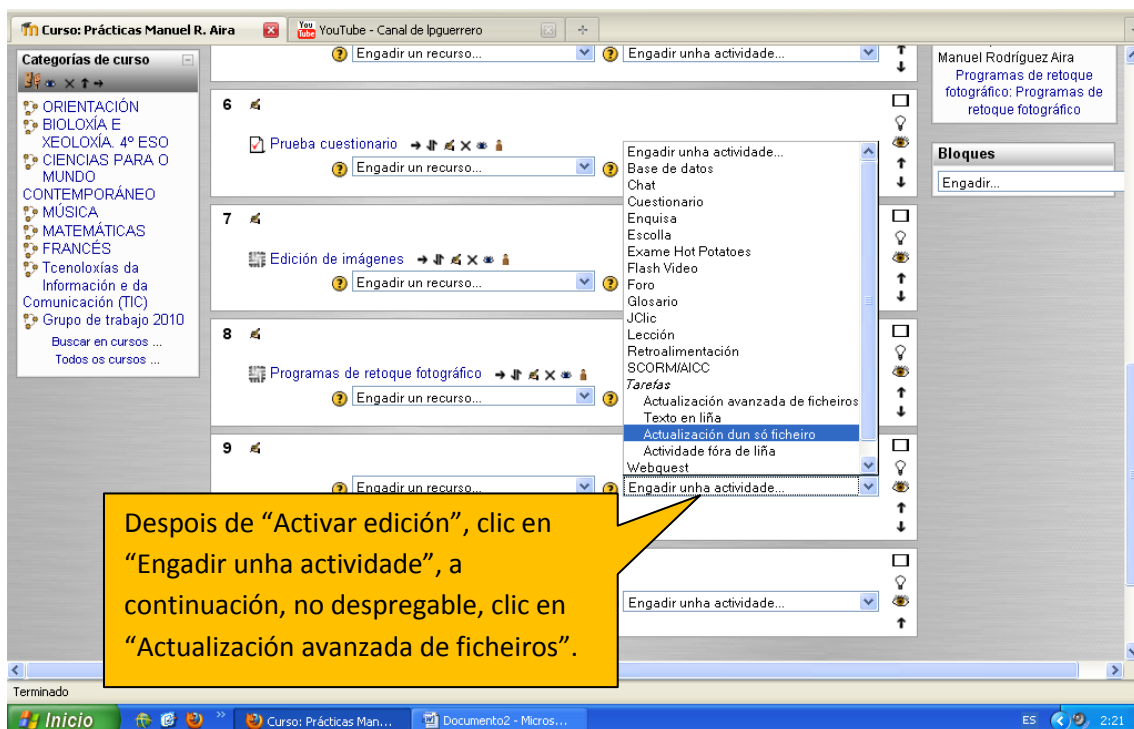




TAREFAS. Actualización avanzada de ficheros

As tarefas son uns dos recursos máis importantes dos que dispón Moodle porque van permitir que os nosos alumnos elaboren traballos e os “suban” ao aula virtual. Despois, o profesor, poderá corrixilos, comentalos e cualificalos.

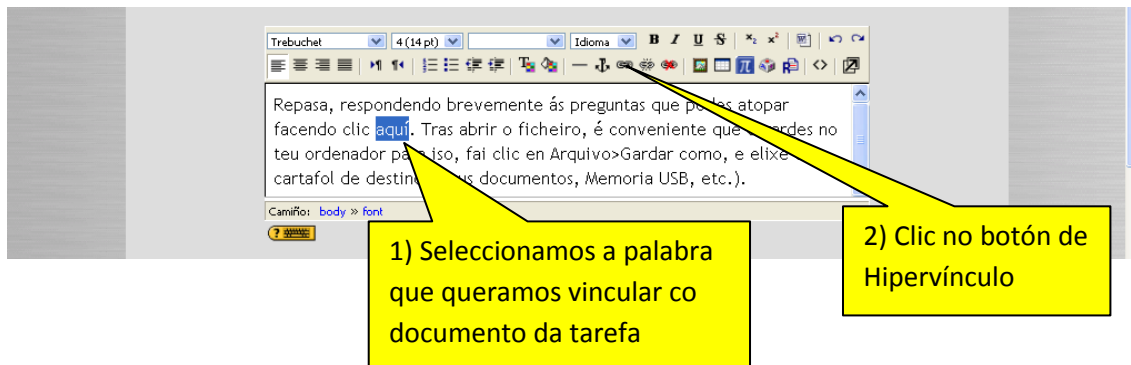
1) Crear a tarefa



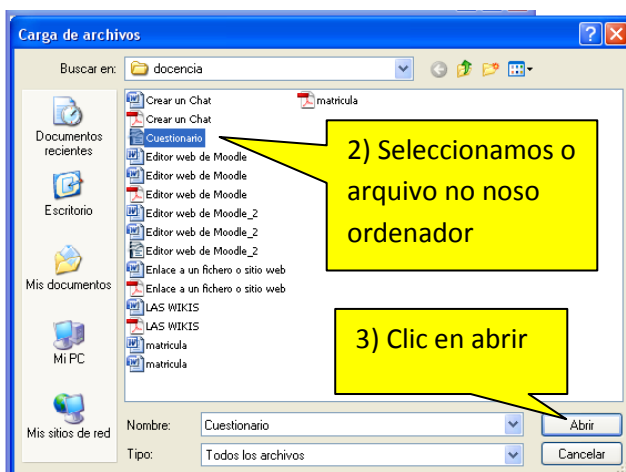
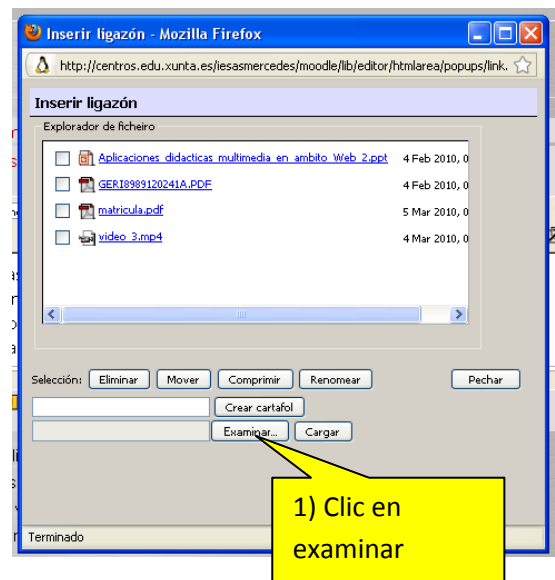
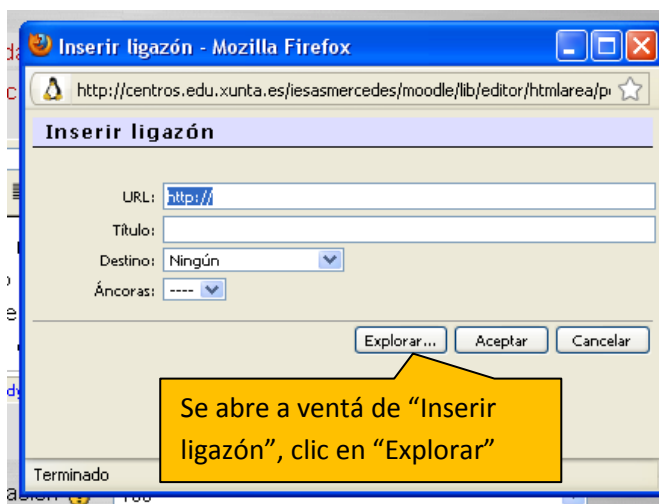
2) Configurar a tarefa

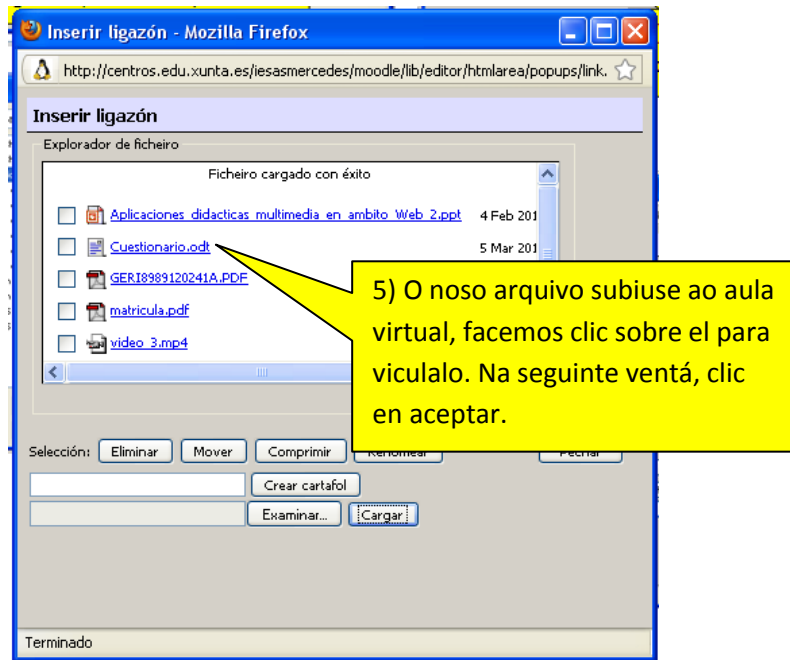


3) Crear enlaces

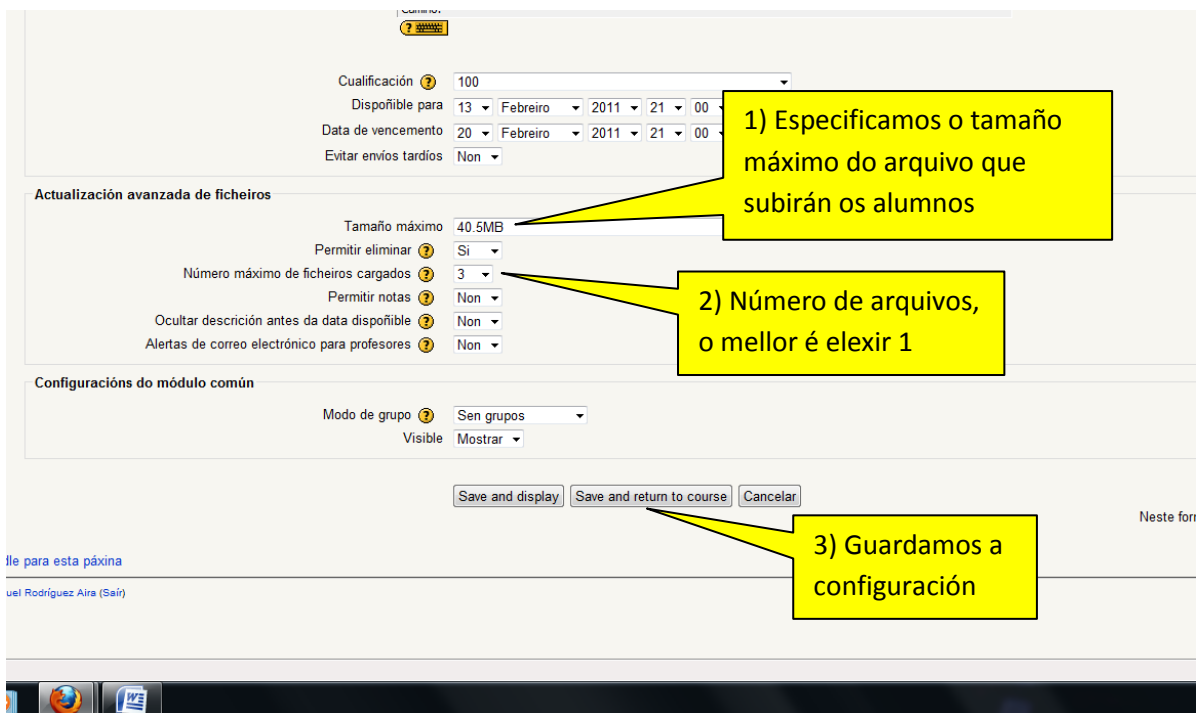


4) Buscamos o documento da tarefa





5) Gardamos a configuración



6) Información que chega aos alumnos

The screenshot shows a Moodle assignment page titled "PMA: Tarefa: Cuestionario sobre Photoshop. Actividade obrigatoria". The page content includes instructions in Spanish: "Repasa, respondendo brevemente ás preguntas que podes atopar facendo clic aquí. Tras abrir o ficheiro, é conveniente que o gardes no teu ordenador para iso, fai clic en Arquivo>Gardar como, e elixe o cartafol de destino (Meus documentos, Memoria USB, etc.).". Below the instructions, there is a file upload section with the text "Cargar ficheiros (Tamaño máximo: 40MB)", a file input field, and buttons for "Cargar este ficheiro" and "Examinar...". The user is identified as "Manuel Rodríguez Aira (Sair)".

1) Cando fan clic na ligazón, ábrese o documento ca tarefa, a realizan e a gardan.

2) Completada a tarefa, búscana facendo clic en "Examinar"

3) Soben a tarefa ao aula virtual facendo clic en "Cargar este ficheiro".



Tarefas en Moodle by Manuel Rodríguez Aira is licensed under a [Creative Commons Attribution-NonCommercial-NoDerivs 3.0 Unported License](https://creativecommons.org/licenses/by-nc-nd/3.0/).