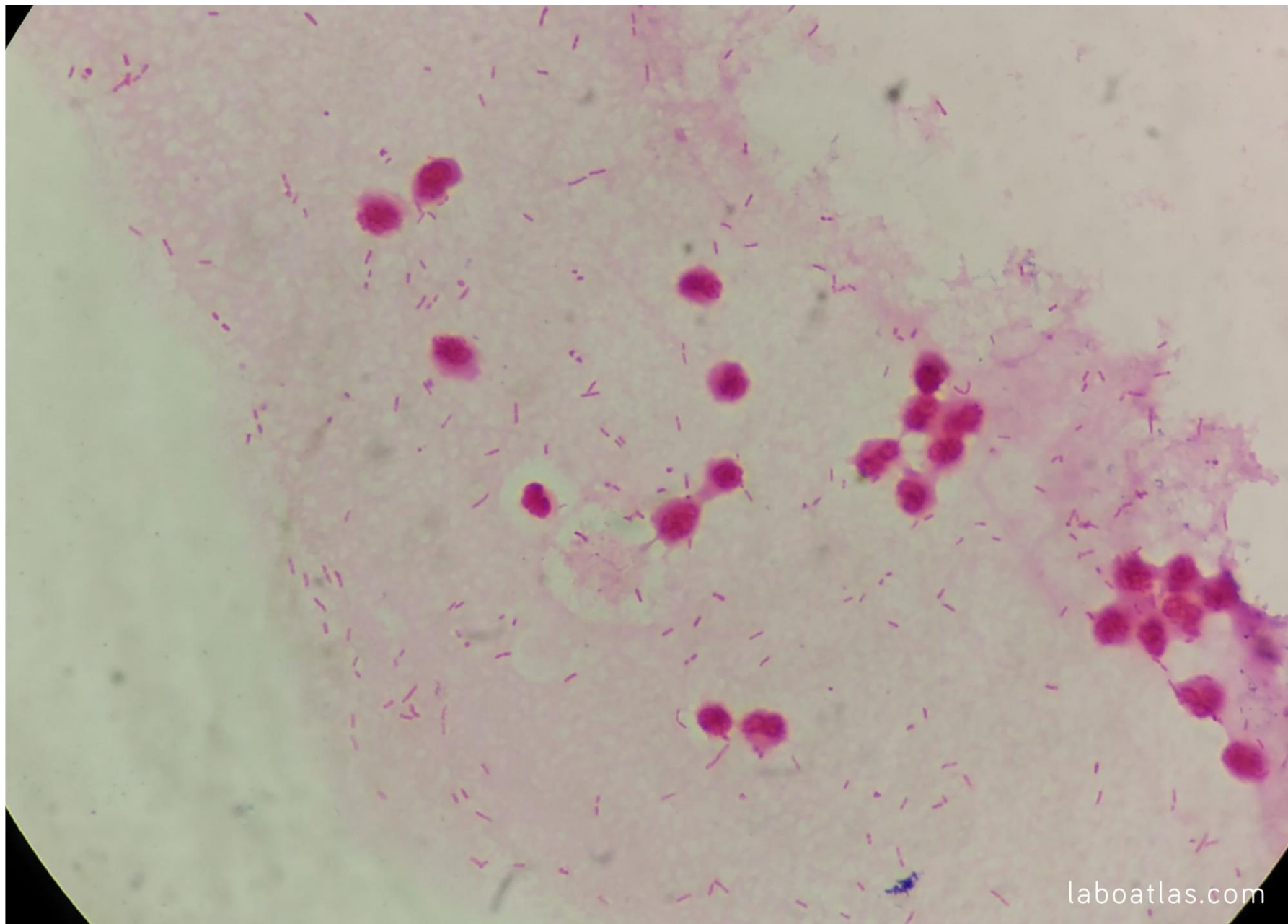
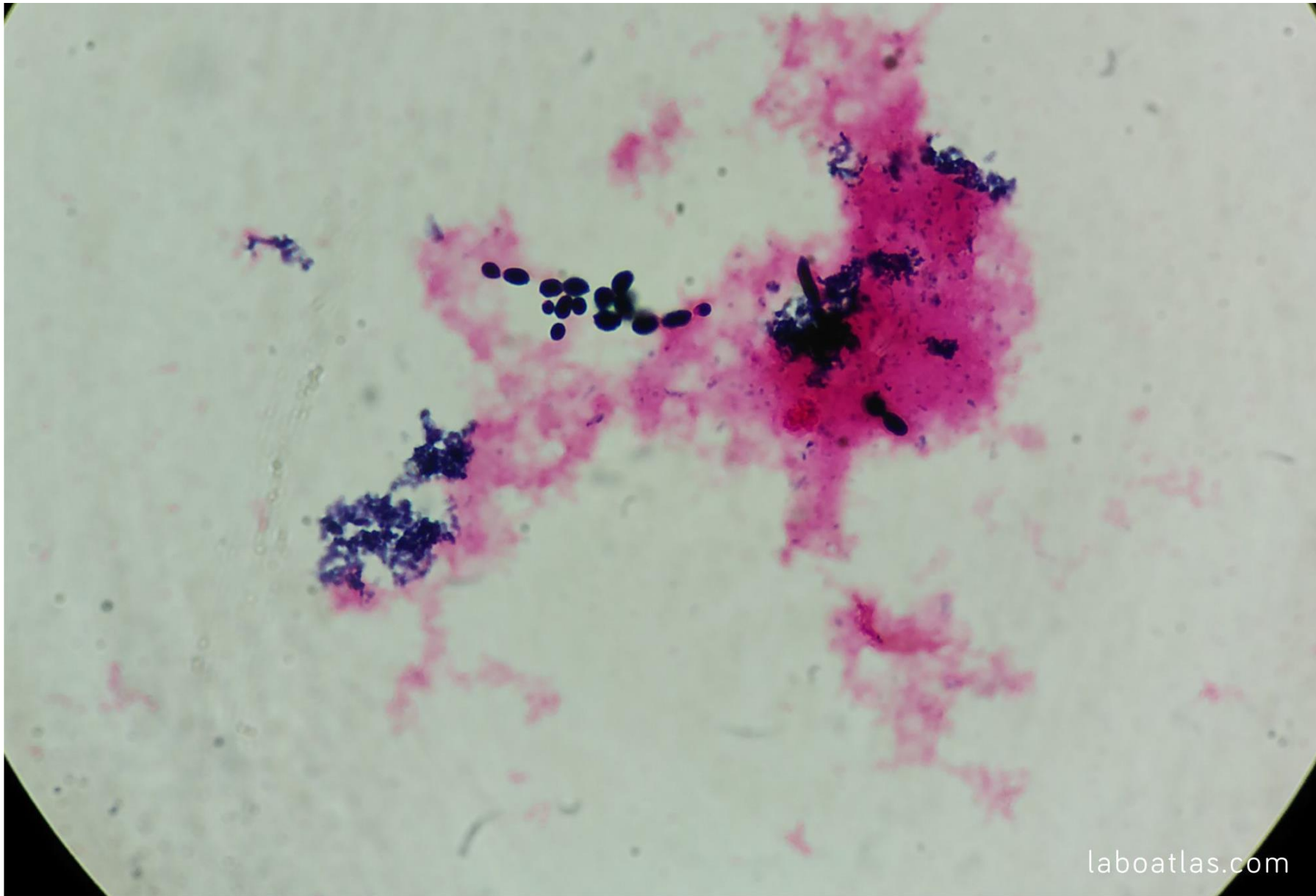


Mostra de urina (1000X). Tinción de Gram. Vense abundante estreptococos Gram +

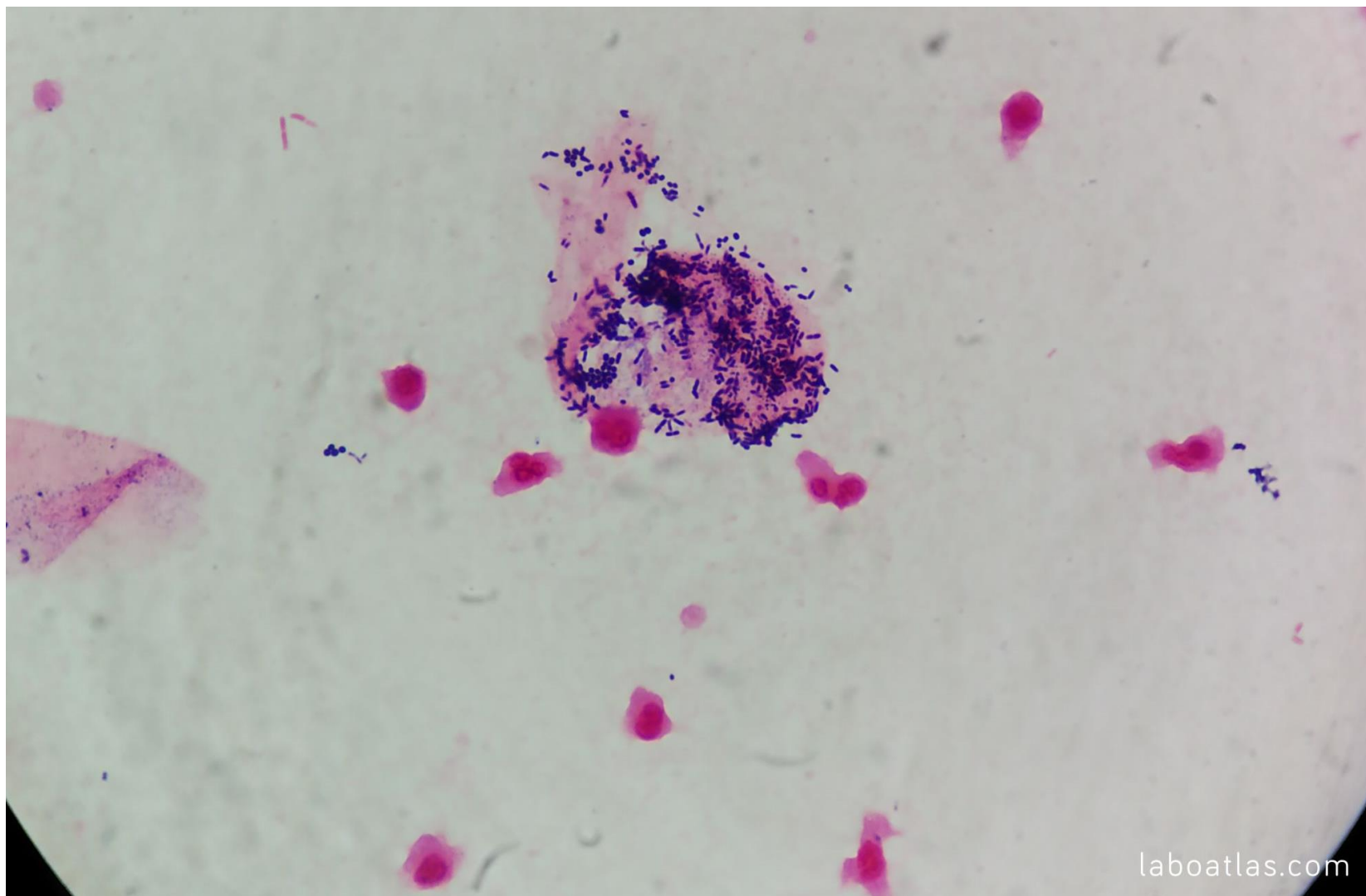


Mostra de urina (1000X). Tinción de Gram. Vense abundantes bacilos Gram -

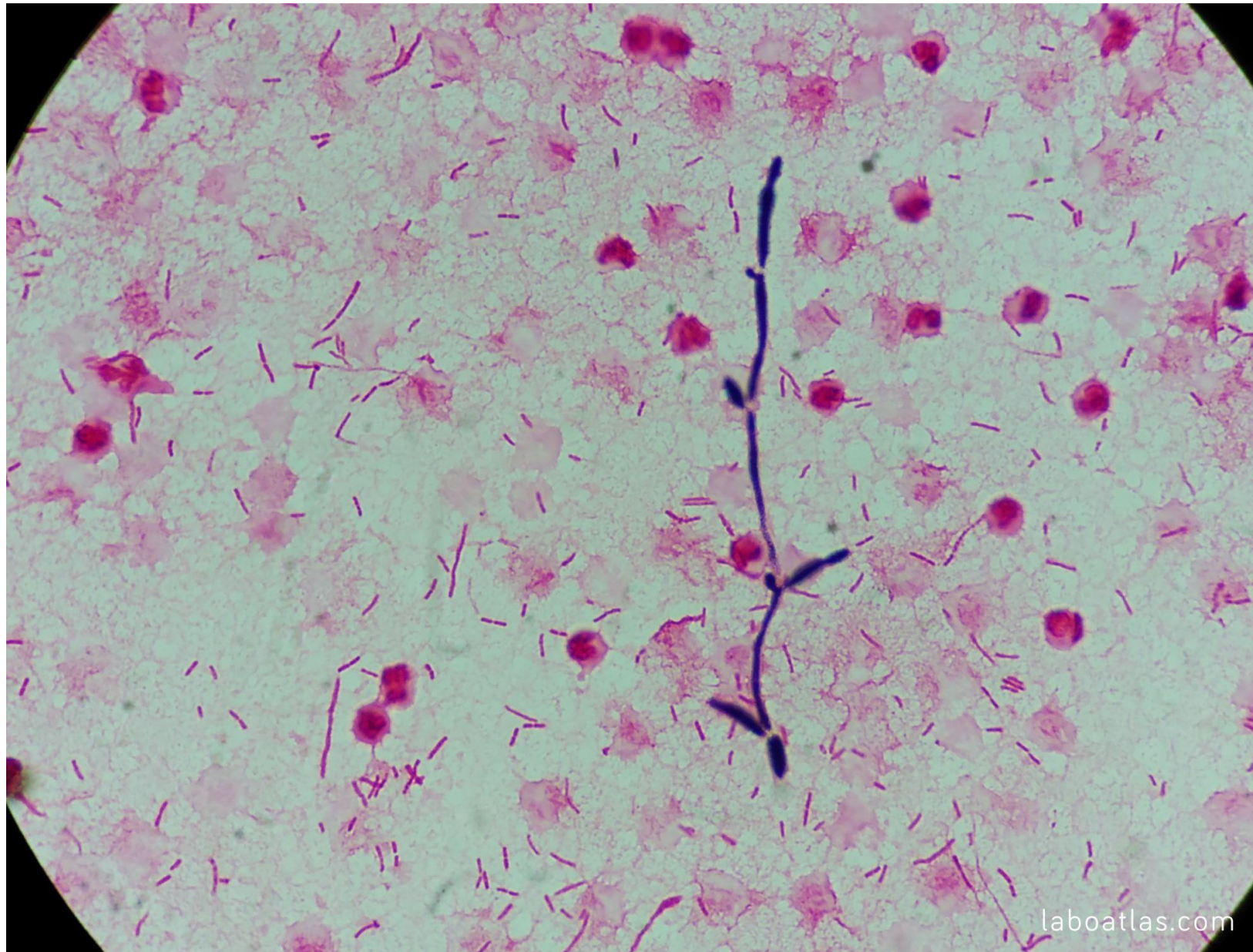


Mostra de urina (1000X). Tinción de Gram. Vense levaduras.



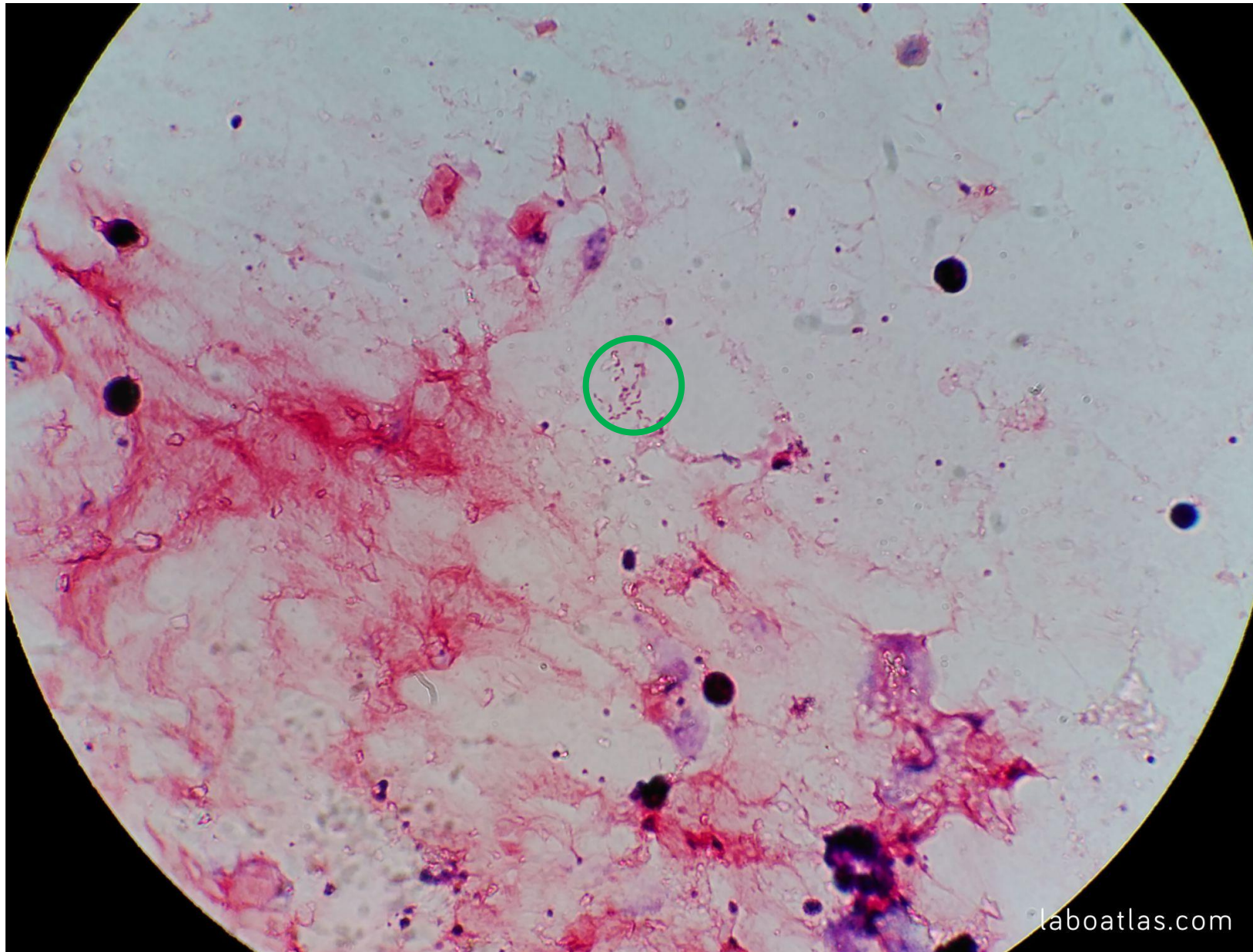


Mostra de urina (1000X). Tinción de Gram. Vense cocos Gram + e dous bacilos Gram -, e abundantes leucocitos polimorfonucleares

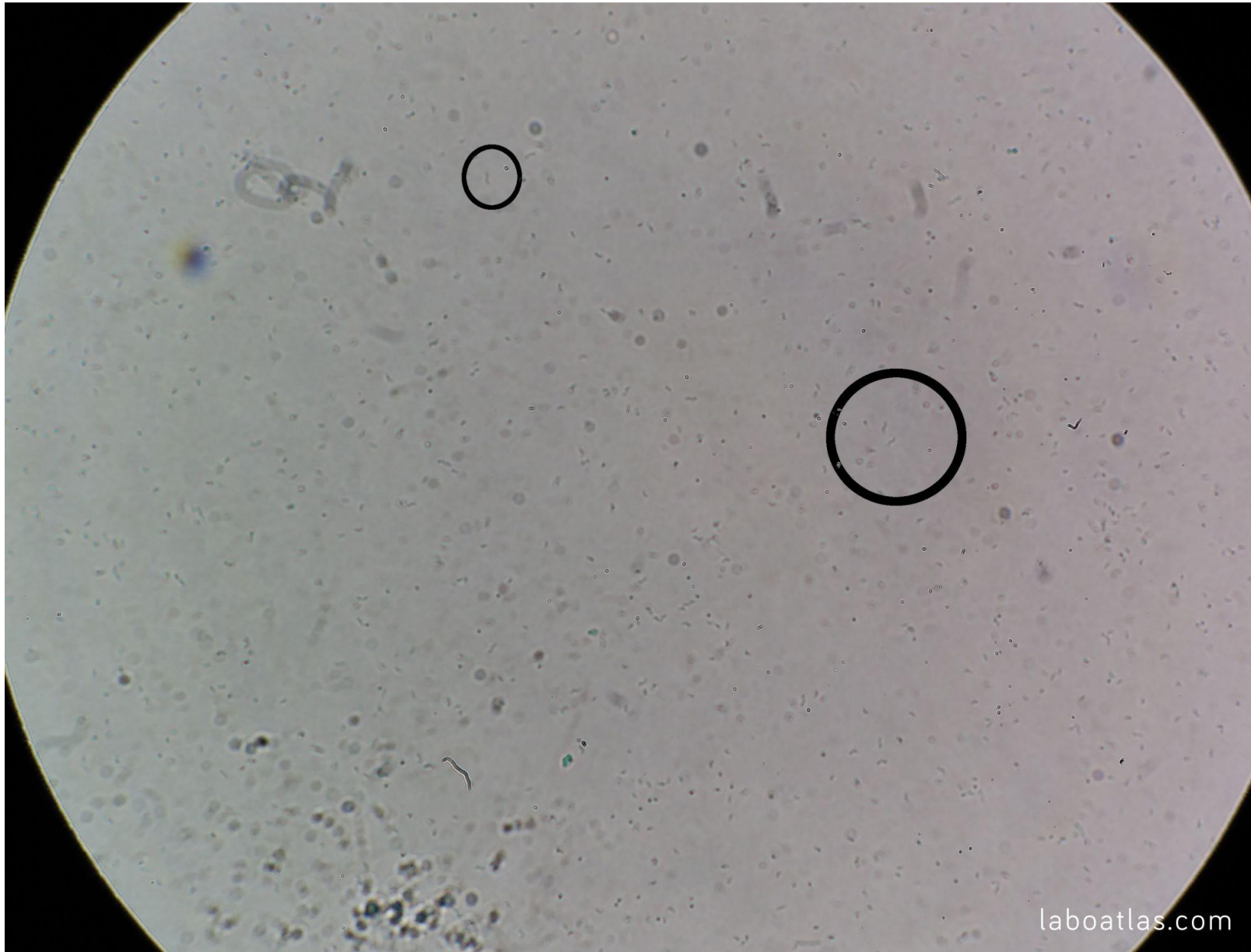


Mostra de urina (1000X). Tinción de Gram. Vense abundantes bacilos Gram – e abundates leucocitos polimorfonucleares.



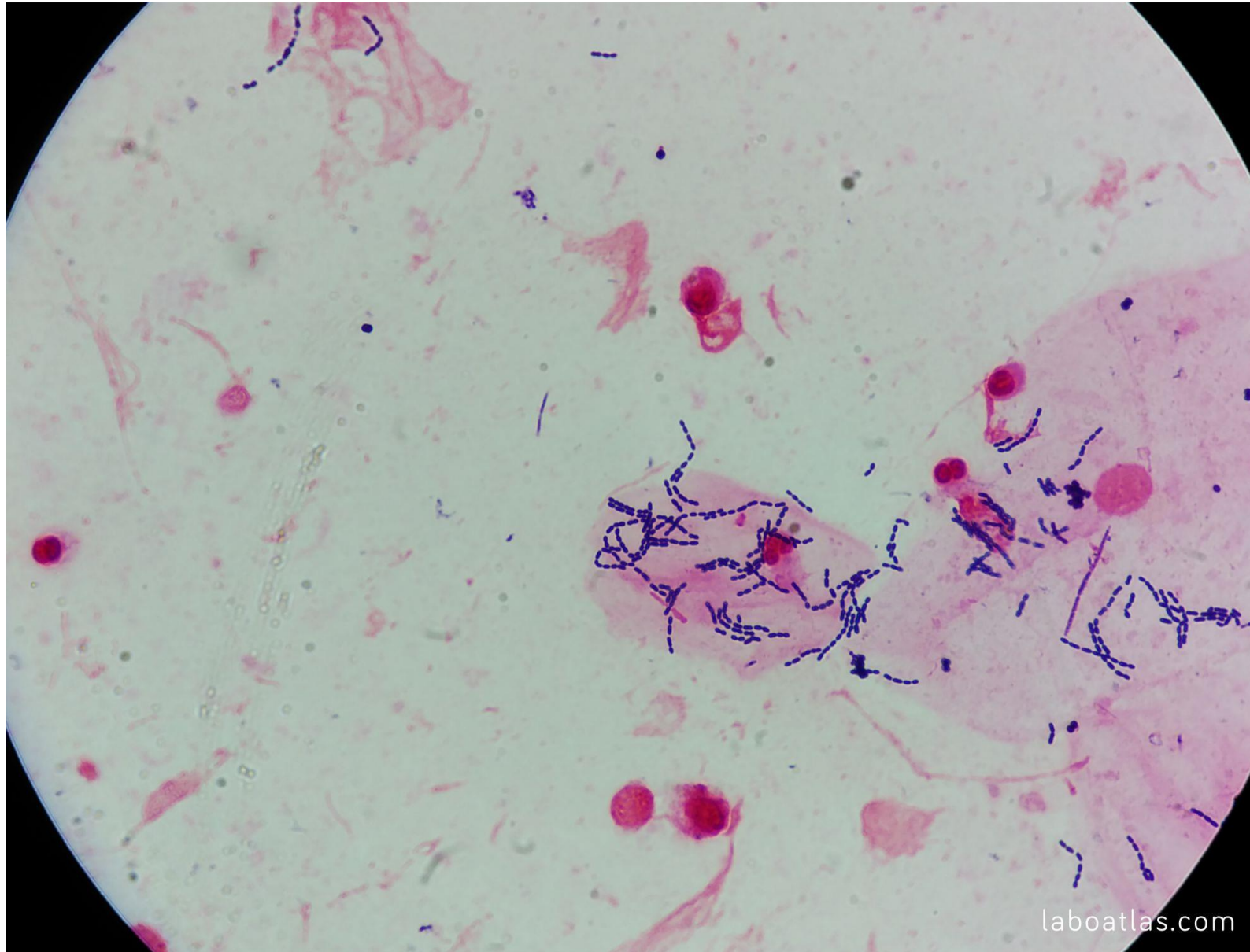


Mostra: biopsia gástrica (1000X). Tinción de Gram. Detéctase *Helicobacter pylori* (dentro do círculo verde).



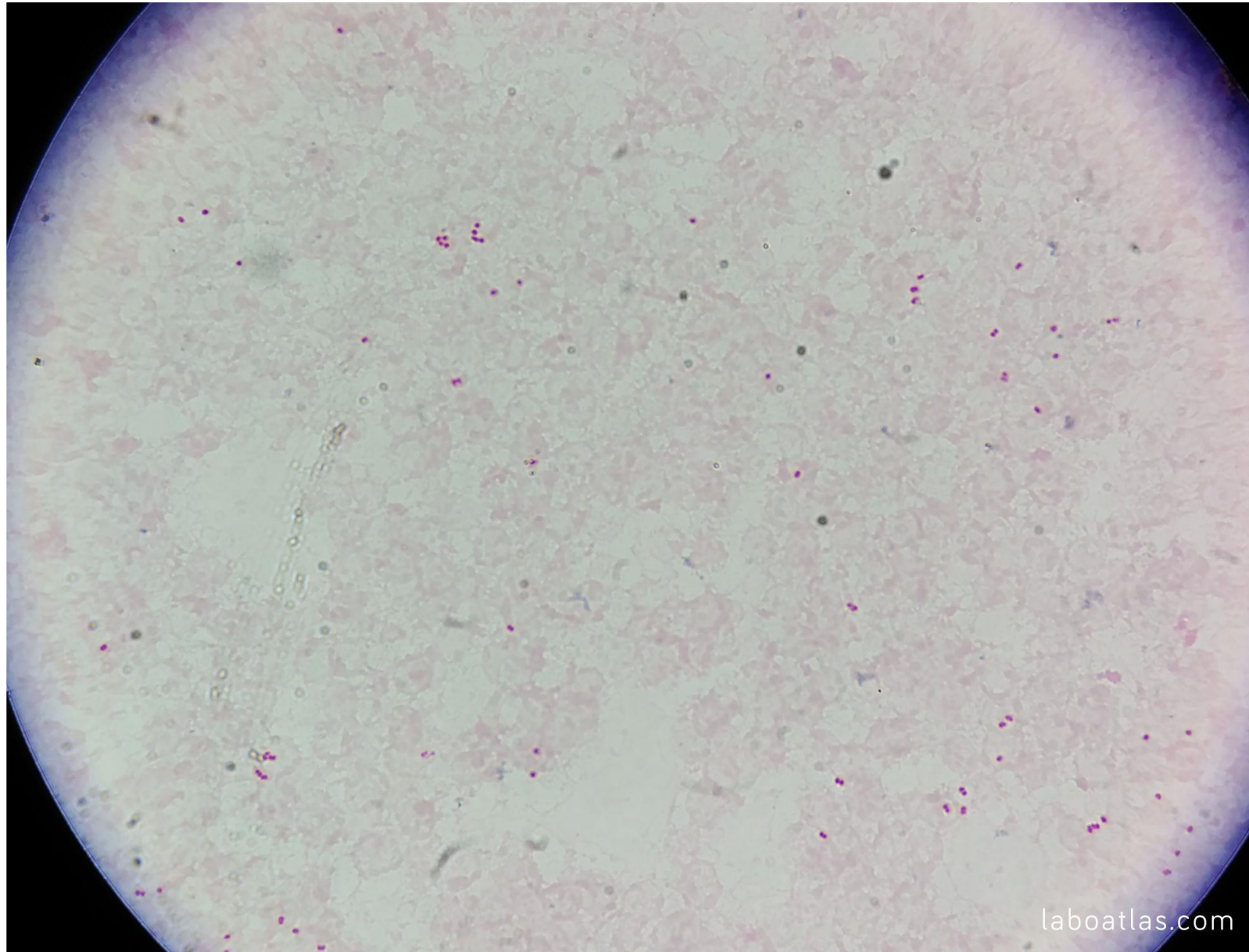
Mostra: fezes (1000X). En fresco. Obsérvanse formas en ás de gaviota, característico de *Campylobacter* sp.



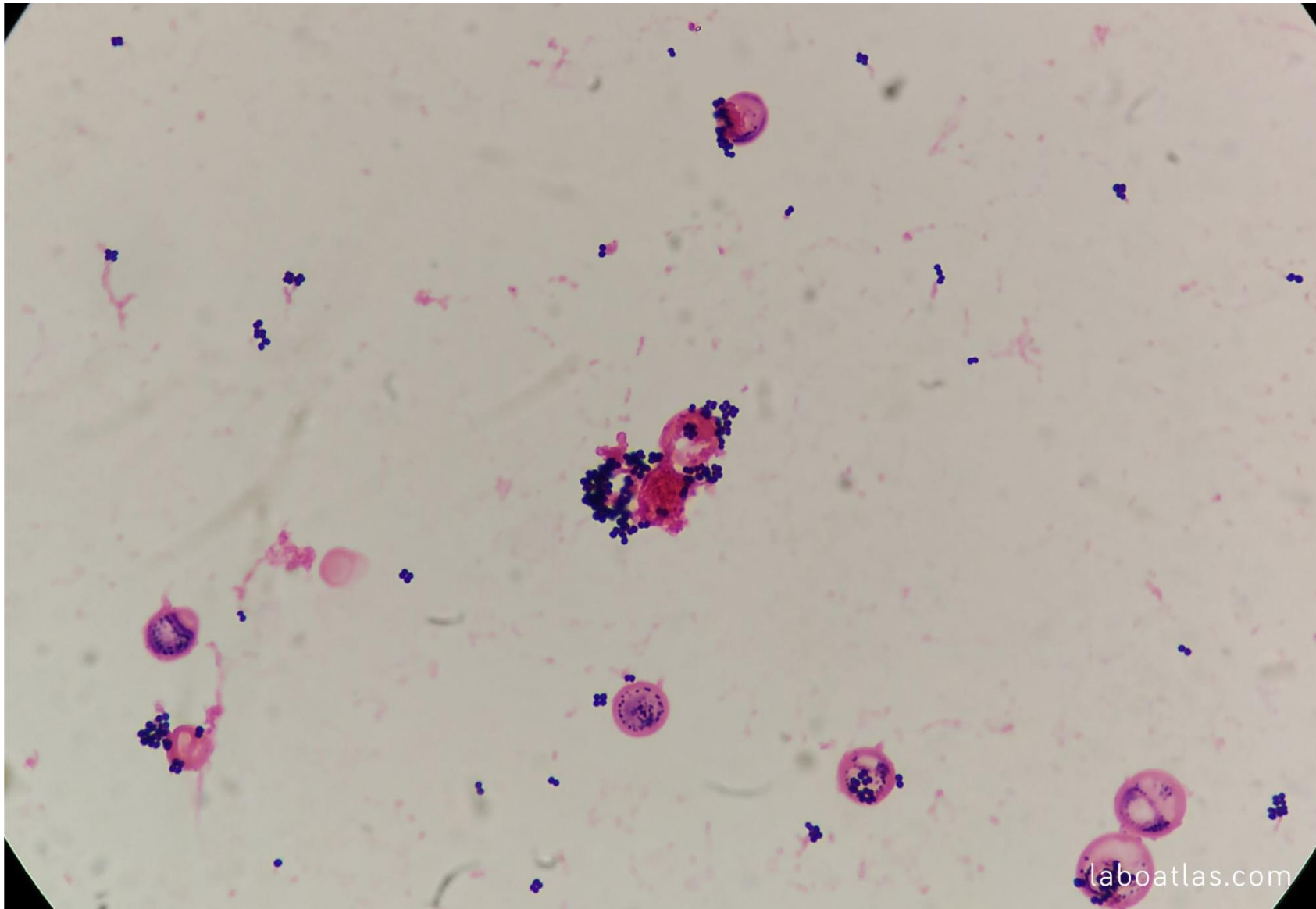


Mostra: esputo (1000X). Tinción de Gram. Pódense ver algún diplococos Gram + e cadeas de bacilos Gram +. Tamén se observan polimorfonucleares.



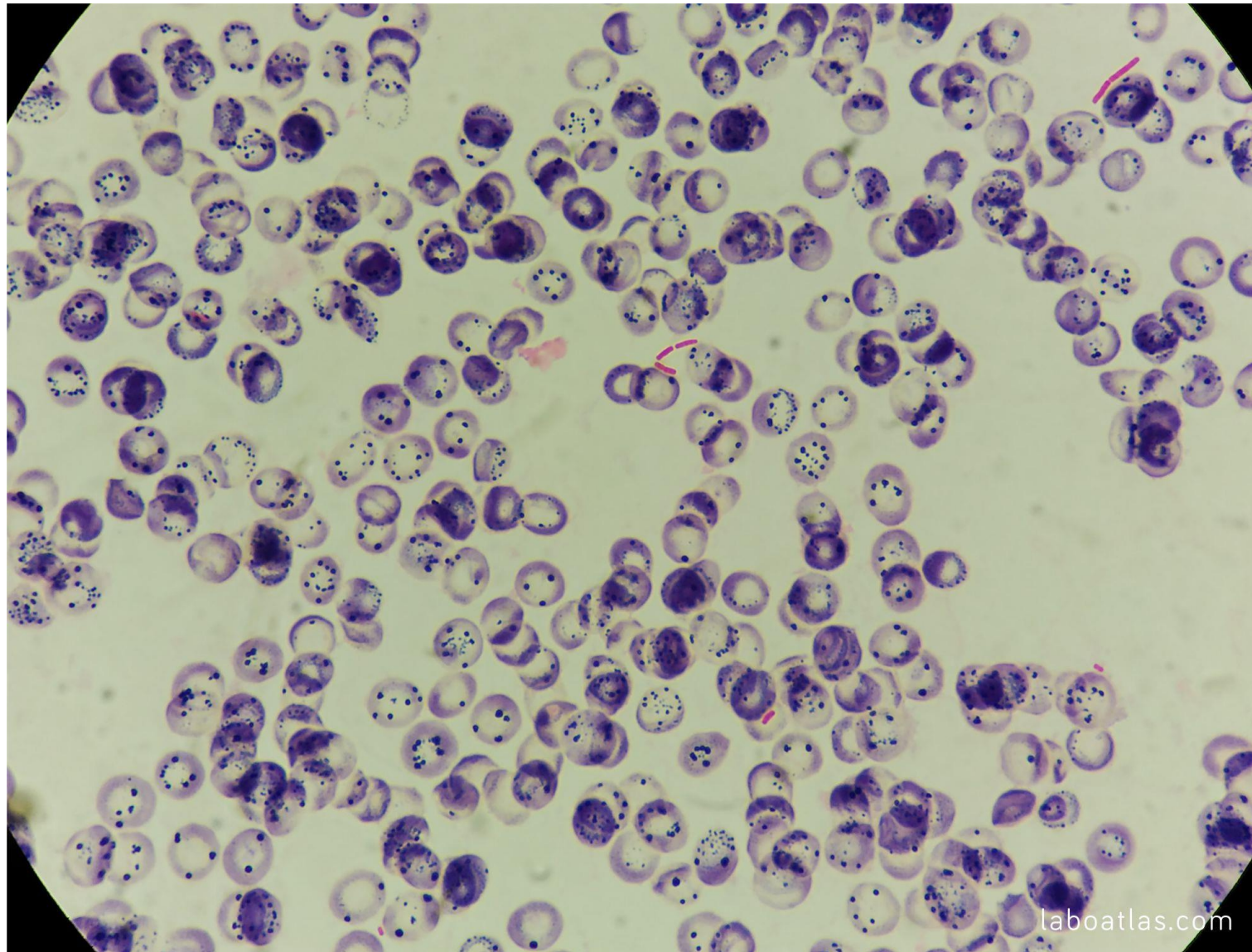


Mostra: LCR (1000X). Tinción de Gram. Pódense ver diplococos Gram – con forma de gran de café típicos de *Neisseria meningitidis*.



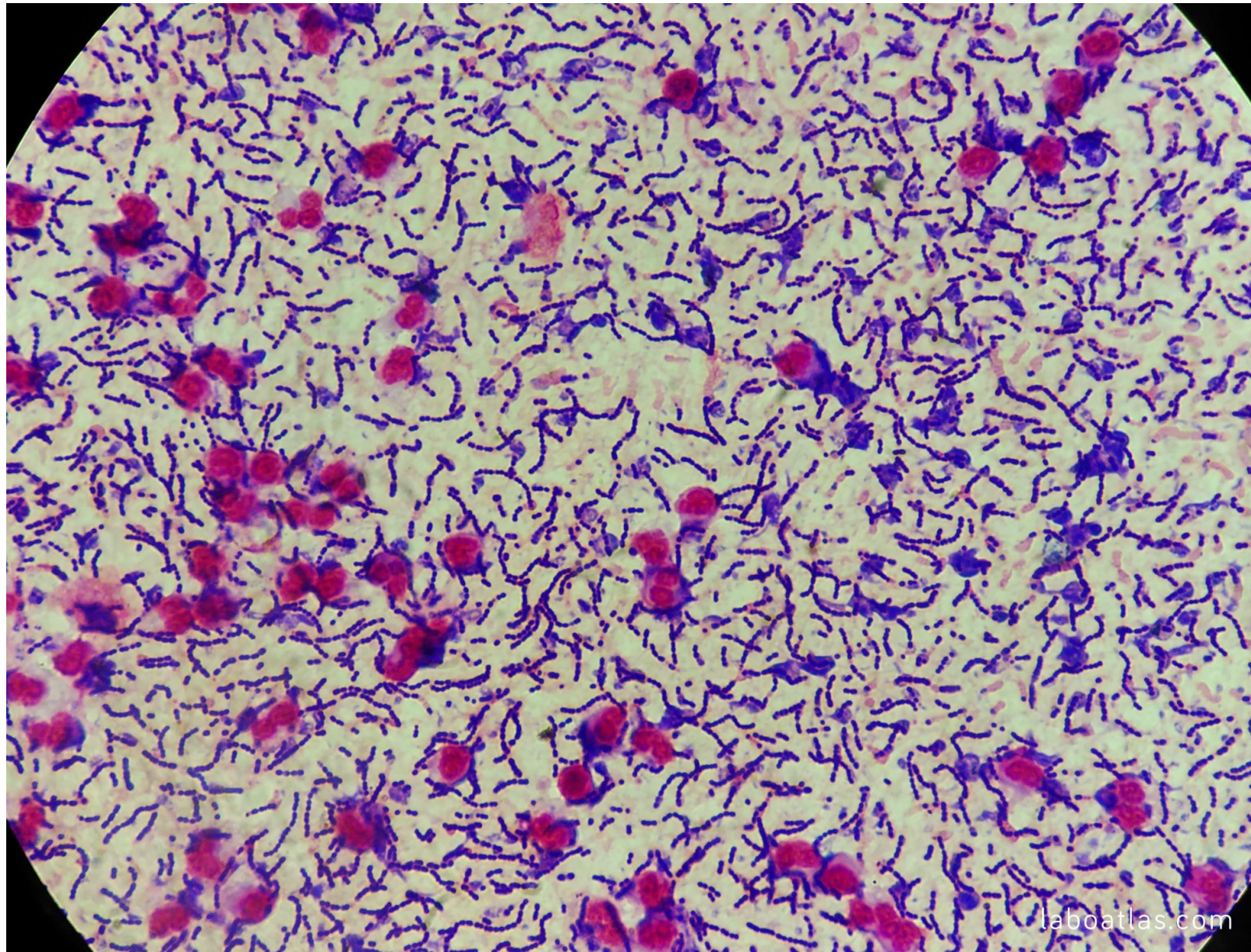
Mostra ???. Tinción de Gram (1000X). Pódense ver cocos Gram + dispostos en tétradas e racimos, compatible con *Staphylococcus* sp. Tamén se observan polimorfonucleares.





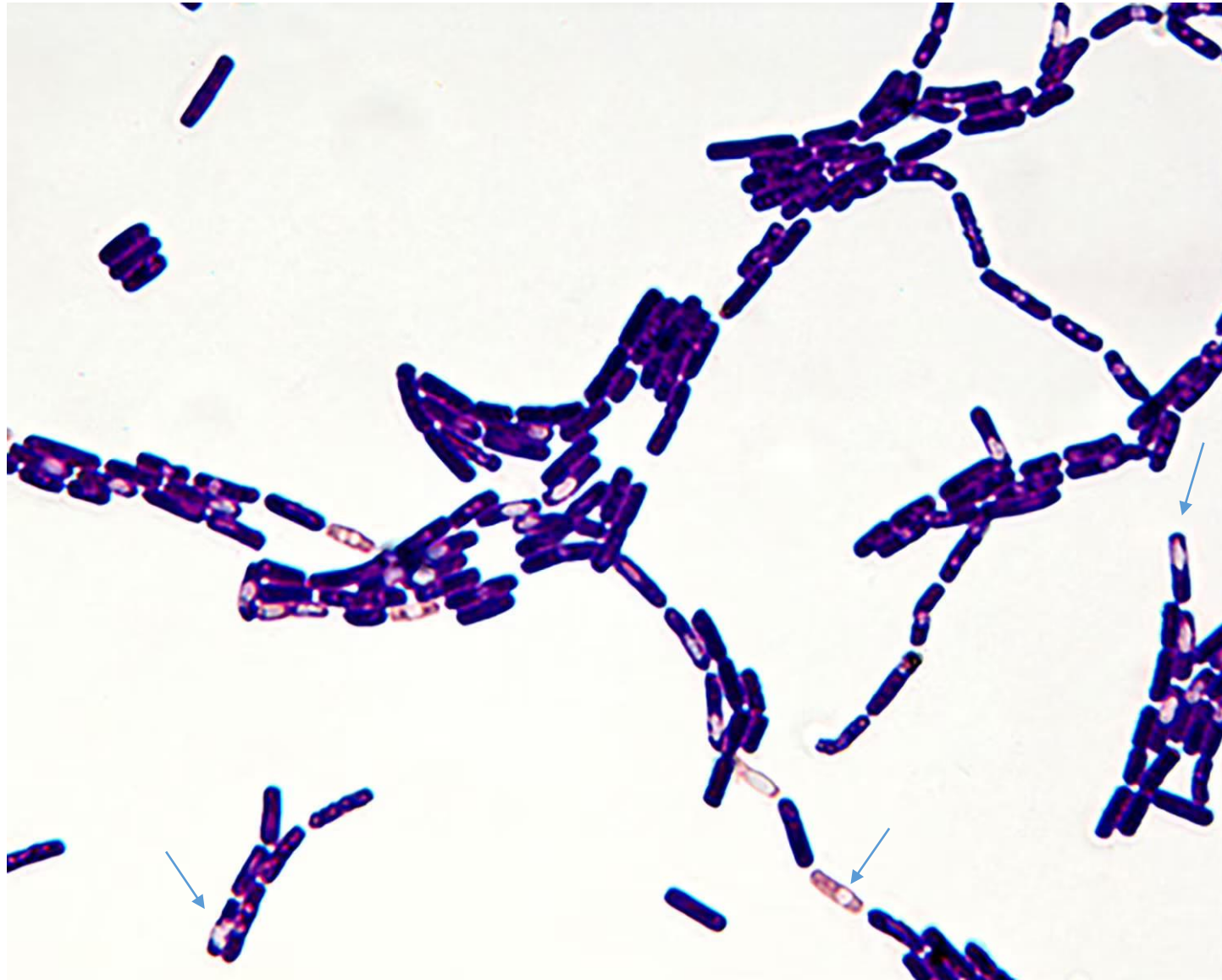
Mostra: sangue. Tinción de Gram (1000X). Pódense ver bacilos Gram -





Mostra: líquido pleural (1000X). Tinción de Gram. Pódense ver abundantes polimorfonucleares e cadeas de *Streptococcus pneumoniae*.





*Bacillus* sp. Gram + con endospora