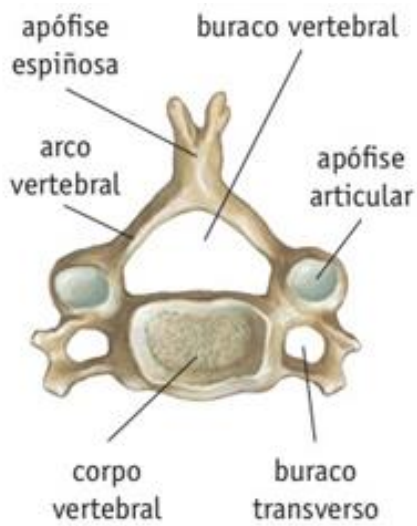
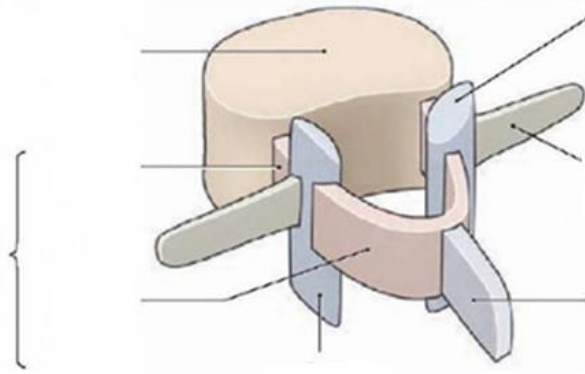


UNIDADE 2: O SISTEMA ESQUELÉTICO.

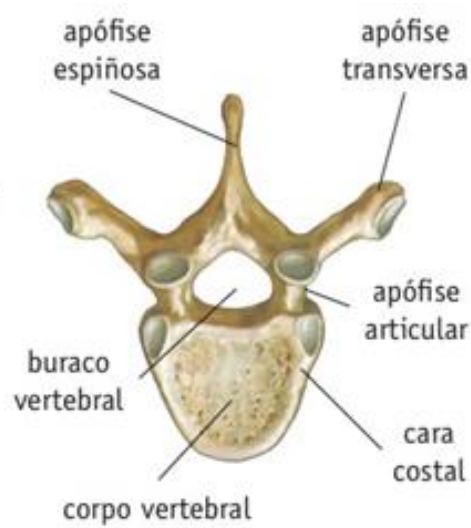
A COLUMNA VERTEBRAL: REXIÓNS E CURVATURAS.



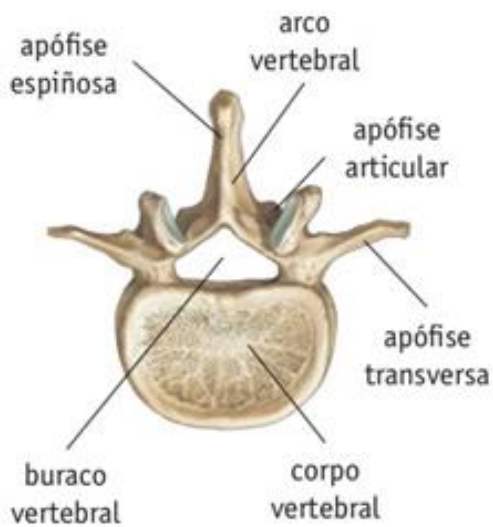
TIPOS DE VÉRTEBRAS.



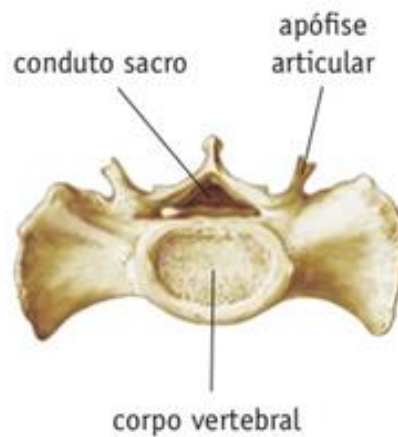
CERVICAL



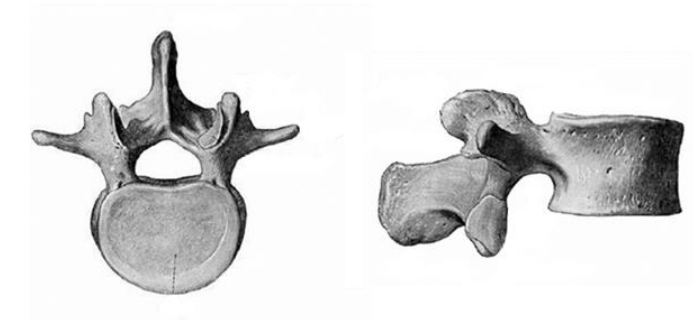
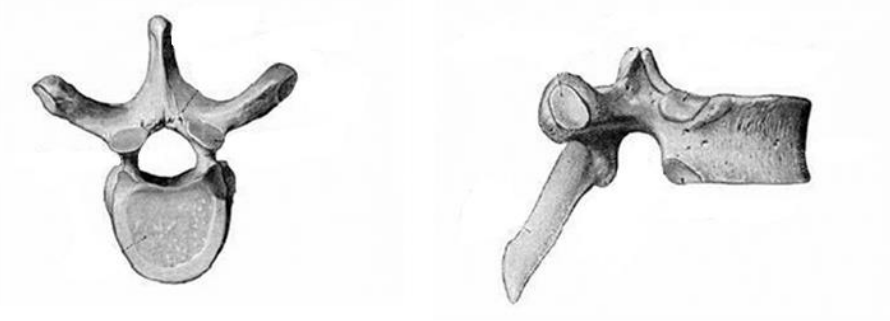
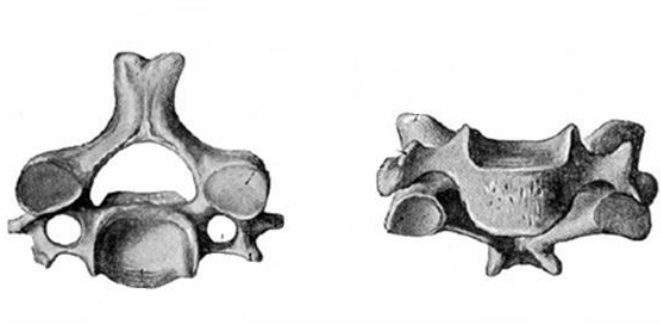
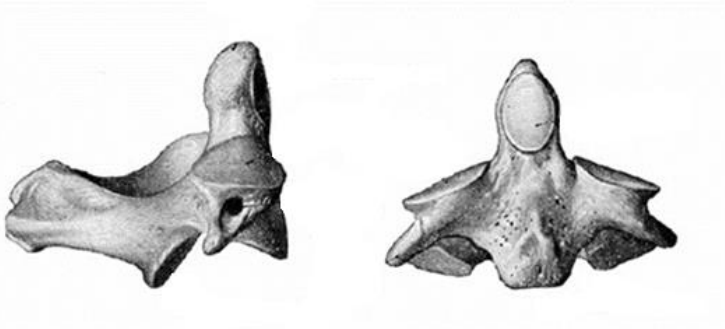
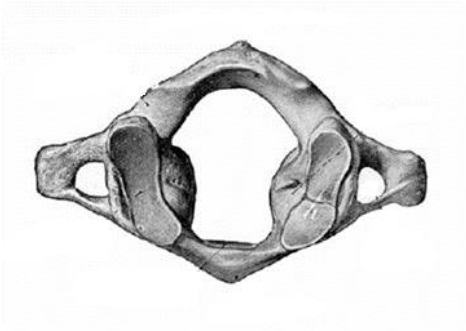
DORSAL OU TORÁCICA

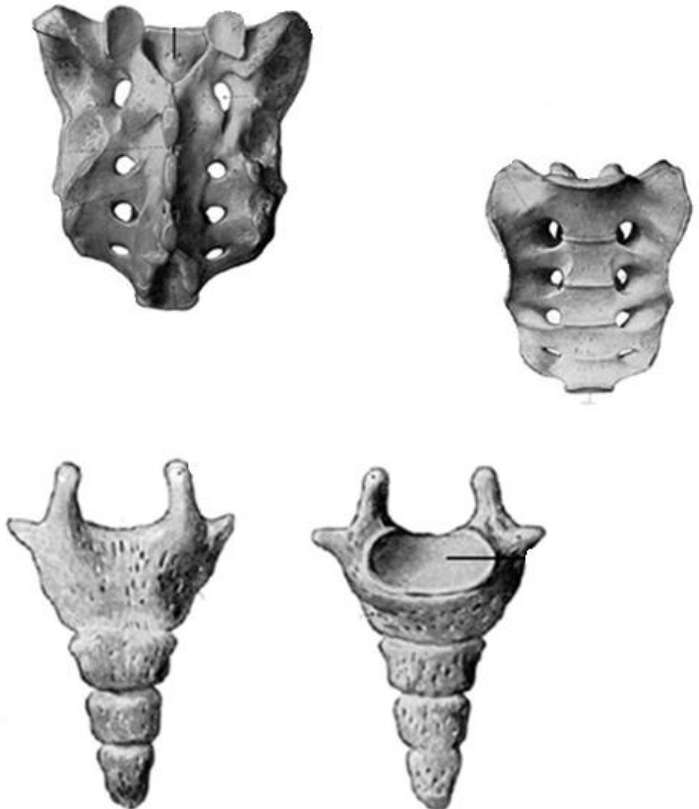


LUMBAR

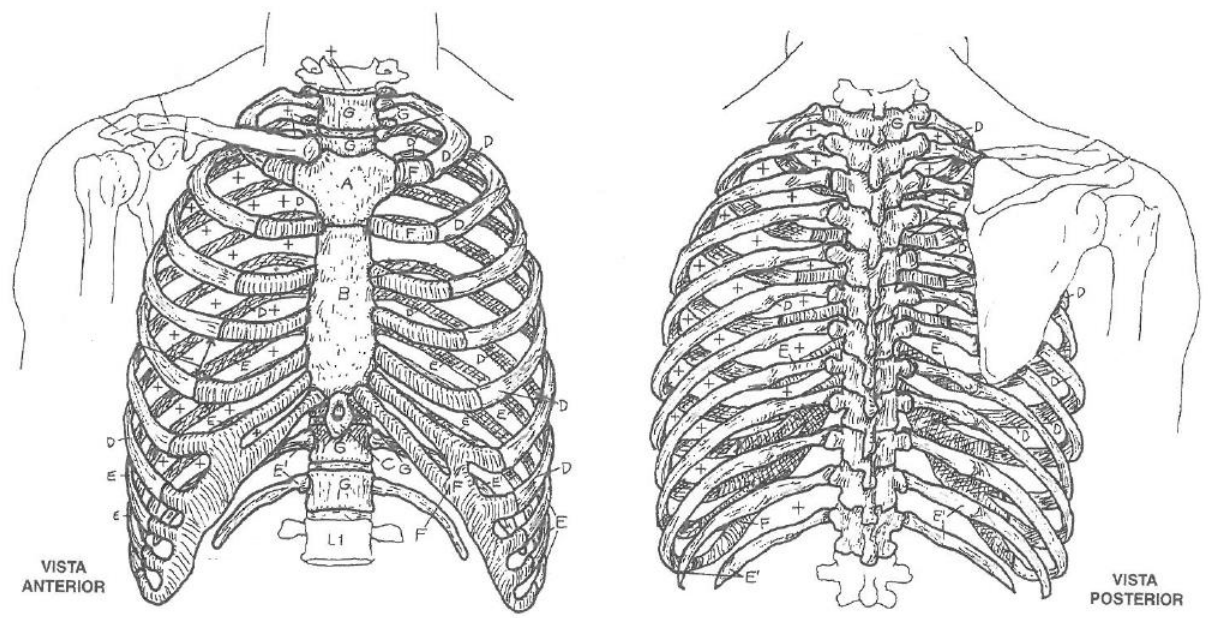


ÓSO SACRO

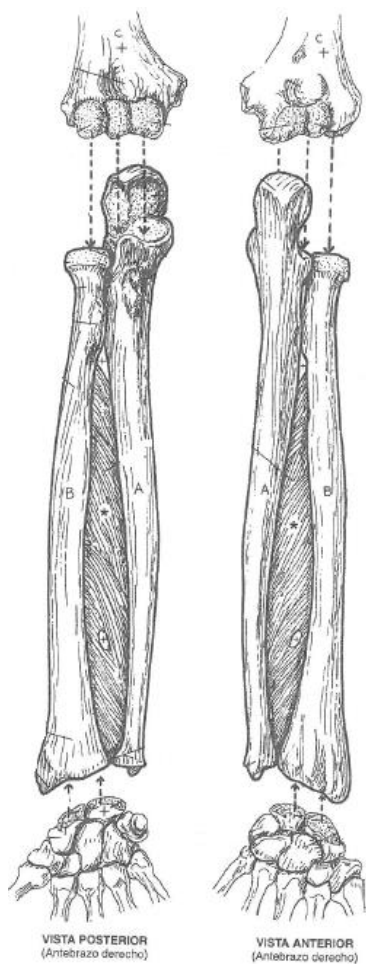
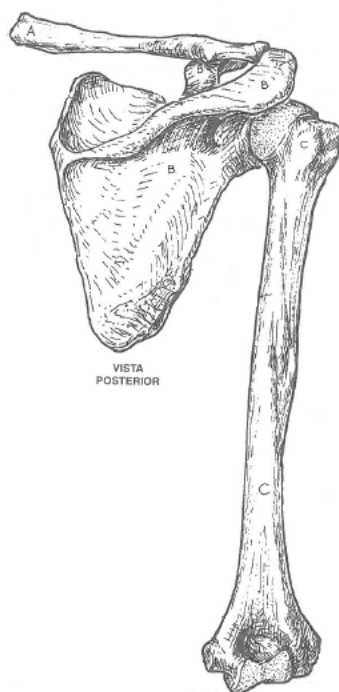
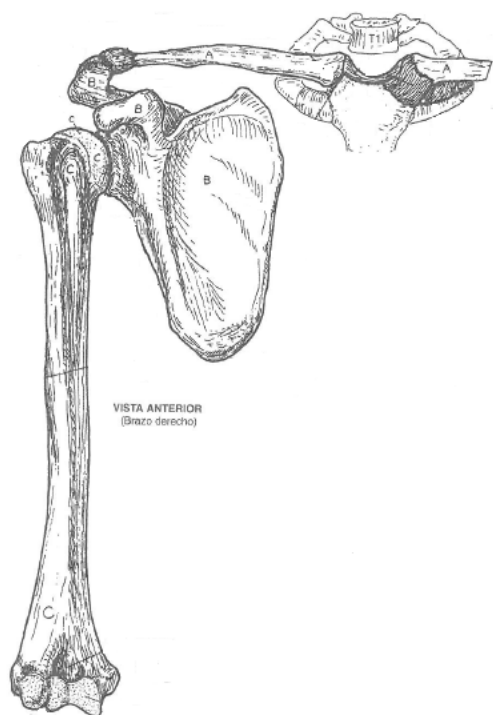


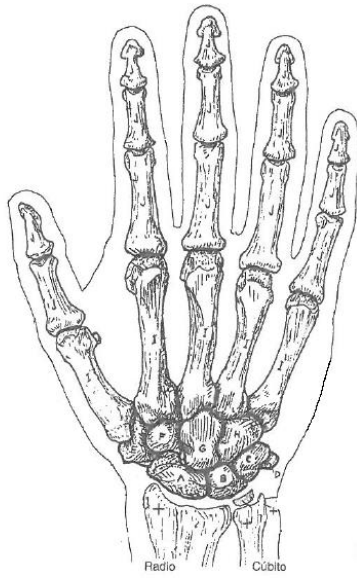


ÓSOS DO TÓRAX

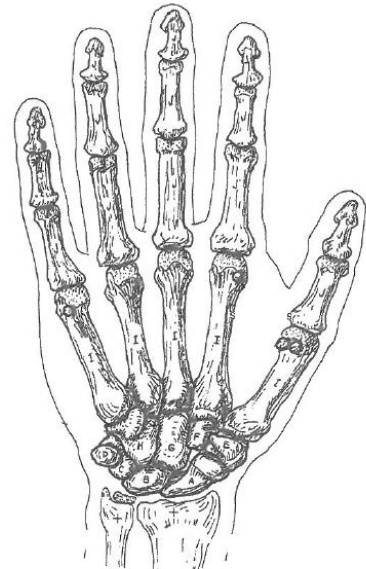
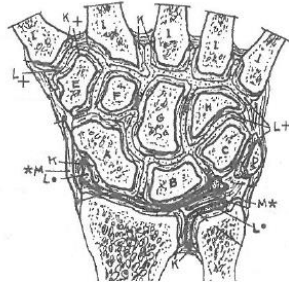


ÓSOS DAS EXTREMIDADES SUPERIORES.





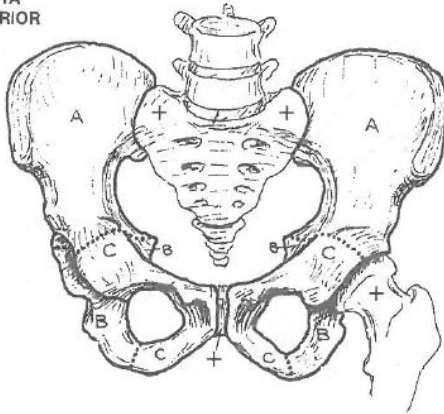
VISTA POSTERIOR (DORSAL)
(Mano derecha)



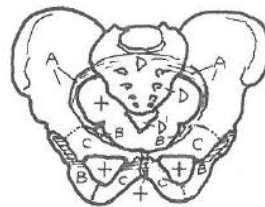
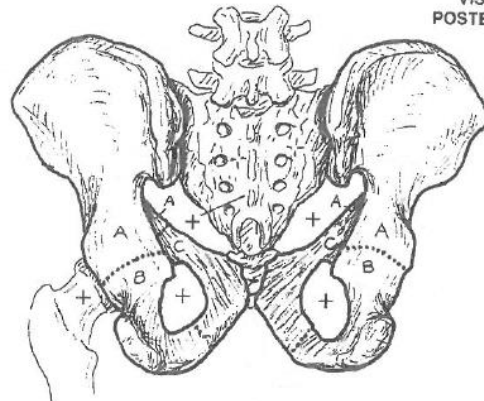
VISTA ANTERIOR (PALMAR)
(Mano derecha)

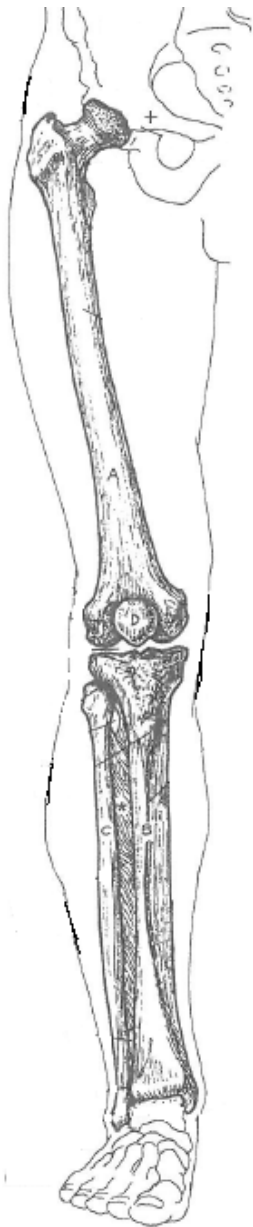
ÓSOS DAS EXTREMIDADES INFERIORES.

VISTA ANTERIOR



VISTA POSTERIOR





VISTA DORSAL
(INFERIOR)
(Pie derecho)



VISTA PLANTAR
(INFERIOR)
(Pie derecho)

