

Worksheet

Name.....Date.....Class.....

1

Numbers (20 - 100).



• Write the numbers:

- 20 = twenty
- 30 = thirty
- 40 = forty
- 50 = fifty
- 60 = sixty
- 70 = seventy
- 80 = eighty
- 90 = ninety
- 100 = one hundred / a hundred

2. Complete. Completa la serie.

An illustration of a boy with brown hair peeking over a pink rectangular box.

1. ten / twenty / thirty / forty

2. sixty / fifty / forty / thirty

3. seventy-one / seventy-two / seventy- three




4. eighty-four / eighty-three / eighty- two



3. Find the words in the wordsearch. Encuentra las palabras en la sopa de letras.

Primary Colours Wordsearch Puzzle Classroom Objects



The wordsearch puzzle grid is 10 columns wide and 10 rows high. The words to be found are: rubber (row 2, col 3), pencil (row 2, col 4), case (row 2, col 8), pen (row 3, col 4), notebook (row 4, col 2), ruler (row 5, col 2), and row (row 10, col 2). Red dots are placed at the start of each word: (3,2), (4,2), (5,2), (6,2), (7,2), (8,2), (9,2), (10,2), (1,3), (1,4), (1,8), (2,4), (3,4), (4,2), (5,2), (6,2), (7,2), (8,2), (9,2), (10,2).

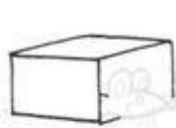
	m	p	a	o	r	u	i	t	a	g
	<u>p</u>	<u>e</u>	<u>n</u>	<u>c</u>	<u>i</u>	<u>l</u>	<u>c</u>	<u>a</u>	<u>s</u>	<u>e</u>
	j	c	a	h	m	a	e	r	s	l
	r	o	t	<u>p</u>	<u>e</u>	<u>n</u>	a	n	t	e
	<u>u</u>	<u>r</u>	<u>a</u>	<u>o</u>	<u>n</u>	<u>s</u>	<u>g</u>	<u>d</u>	<u>l</u>	<u>p</u>
	<u>b</u>	<u>n</u>	<u>o</u>	<u>t</u>	<u>e</u>	<u>b</u>	<u>o</u>	<u>o</u>	<u>k</u>	<u>e</u>
	<u>b</u>	<u>a</u>	<u>n</u>	<u>q</u>	<u>r</u>	<u>s</u>	<u>l</u>	<u>m</u>	<u>o</u>	<u>n</u>
	<u>e</u>	<u>t</u>	<u>u</u>	<u>g</u>	<u>d</u>	<u>l</u>	<u>m</u>	<u>o</u>	<u>j</u>	<u>c</u>
	<u>r</u>	<u>c</u>	<u>p</u>	<u>g</u>	<u>r</u>	<u>s</u>	<u>e</u>	<u>s</u>	<u>d</u>	<u>i</u>
	<u>s</u>	<u>g</u>	<u>r</u>	<u>u</u>	<u>l</u>	<u>e</u>	<u>r</u>	<u>o</u>	<u>w</u>	<u>l</u>



Find the words:

- rubber
- pencil
- notebook
- pencilcase
- ruler
- pen

4. Look and circle the correct answer. Mira y rodea la respuesta correcta.



in



on



under



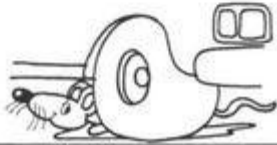
in

under



on

in



on

under



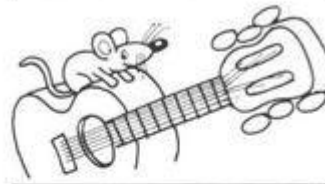
in

under



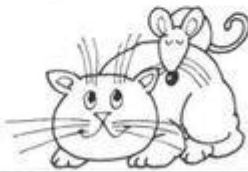
on

under



in

on



under

on



in

on

16

Remember:

IN.....DENTRO DE....

ON.....ENCIMA DE...

UNDER....DEBAJO DE...

PREPOSITIONS (IN – ON – UNDER)

5

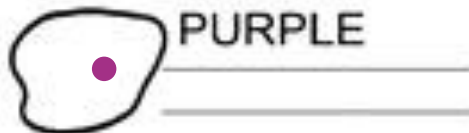
COMPLETE THE SENTENCES WITH **IN**, **ON** OR **UNDER**.



- A. The cat is on the chair.
- B. The dog is in the box.
- C. The shoes are under the table.
- D. The clock is on the table.
- E. The books are on the table.

6. Write and colour. Escribe y colorea.

CLOURS



NAME

7. Find the words in the wordsearch. Encuentra las palabras en la sopa de letras.

Word Search: Colors



BLACK
BLUE
BROWN
GREEN
ORANGE

PINK
RED
WHITE
YELLOW

