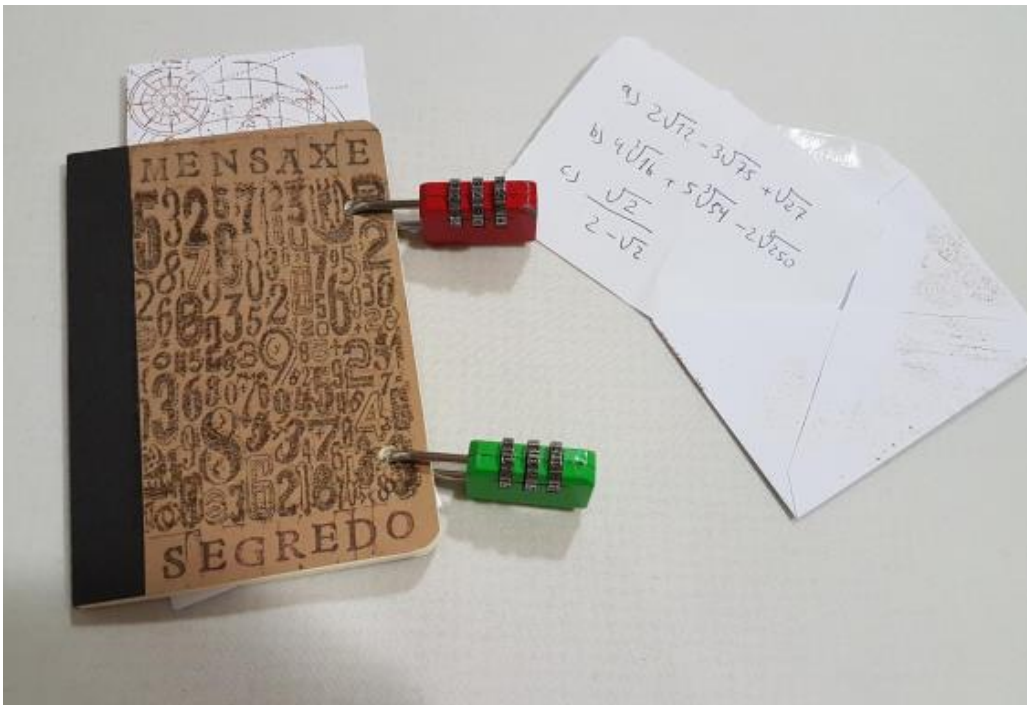


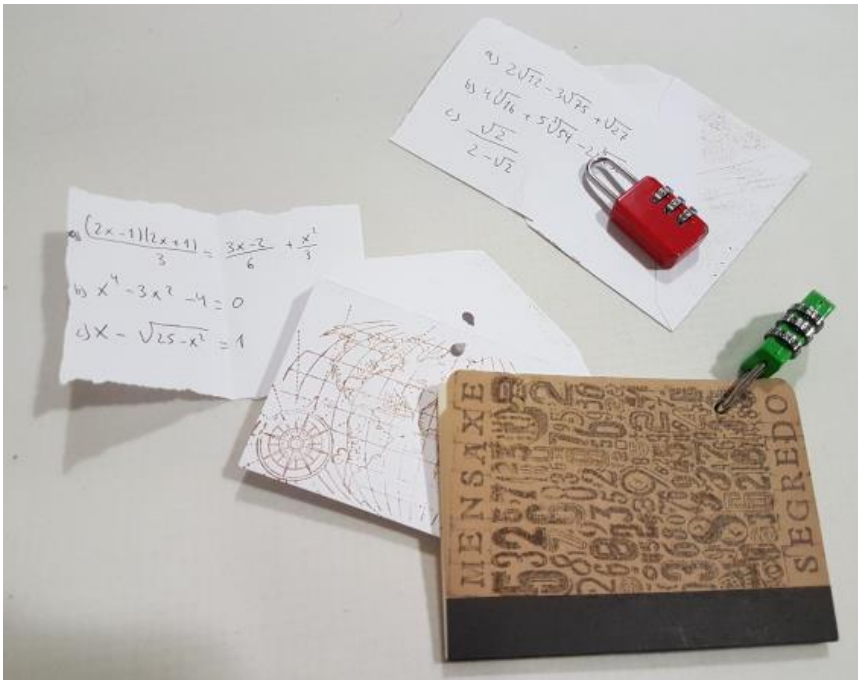
## SECRET MESSAGE



There are two padlocks closing a notebook, there is also an envelope outside of the notebook, that contains 3 exercises.



Solving the three problems in the first envelope you have the solution for the red padlock



When the first padlock is opened, a new envelope appears with 3 new exercises to solve, these exercises give us the password for the second padlock (the green one)



Now the two padlocks are opened, a new envelope appears with a secret message inside.

The teacher must give the clue for the first letter to solve the message: the first letter in the messages correspond with the circle inside, with the letter M in the circle outside (CESAR Code)

Greetings!!  
Lucía