

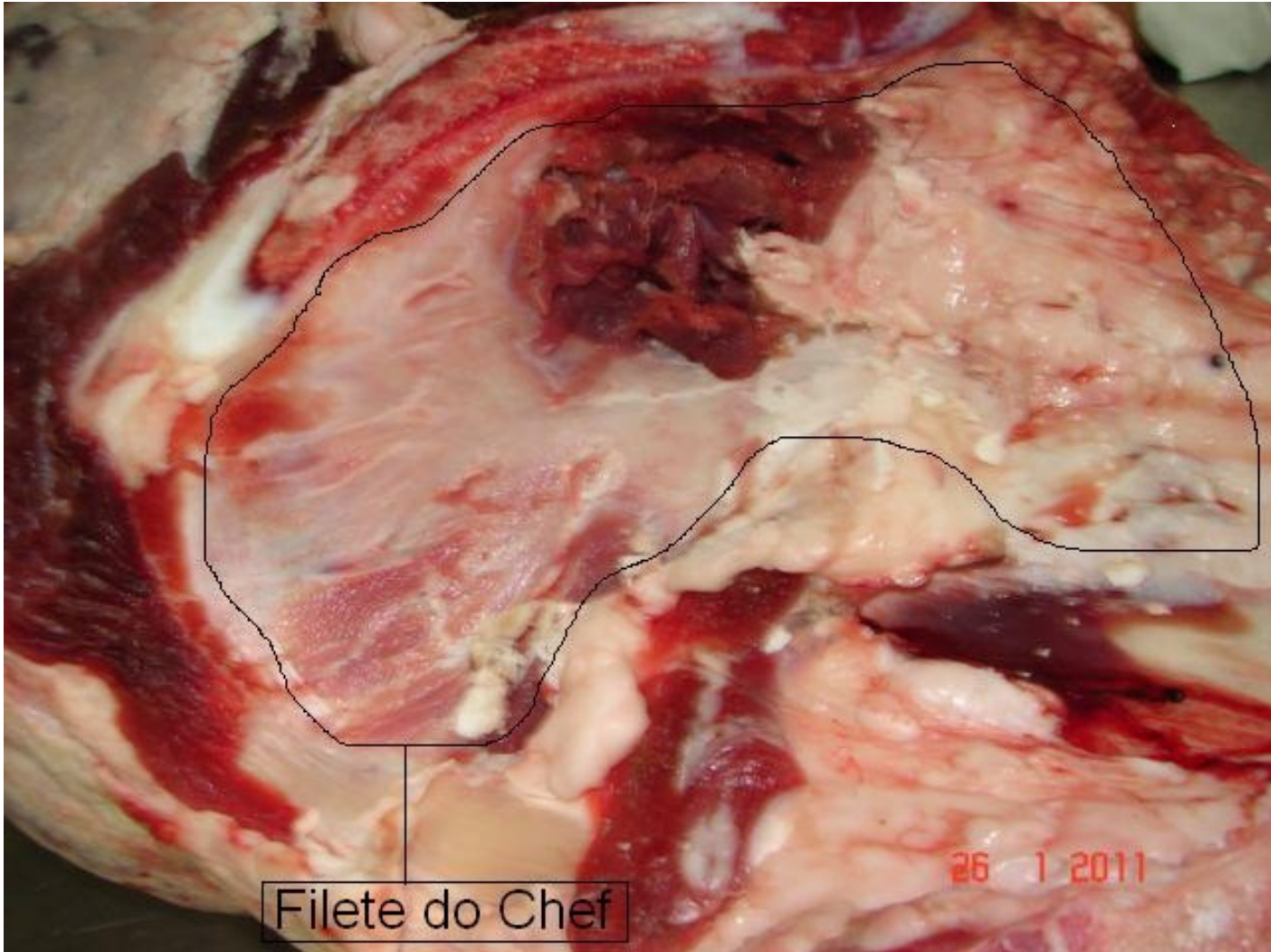
# DESPECE PERNA DE TENREIRA



# RETIRAR FILETE DO CHEF



filete do chef



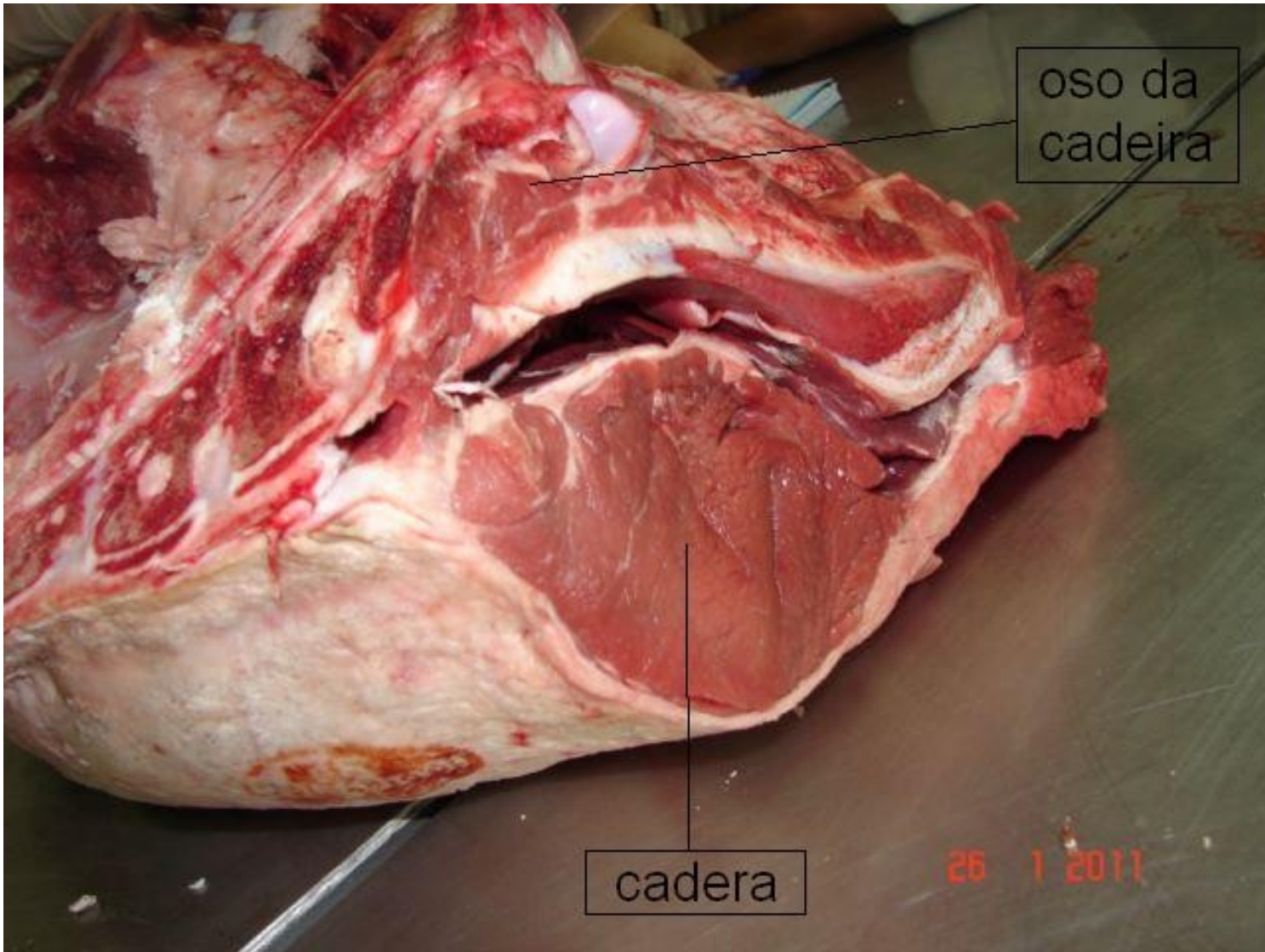
Filete do Chef



filete do chef

# RETIRAR OSO DA CADEIRA

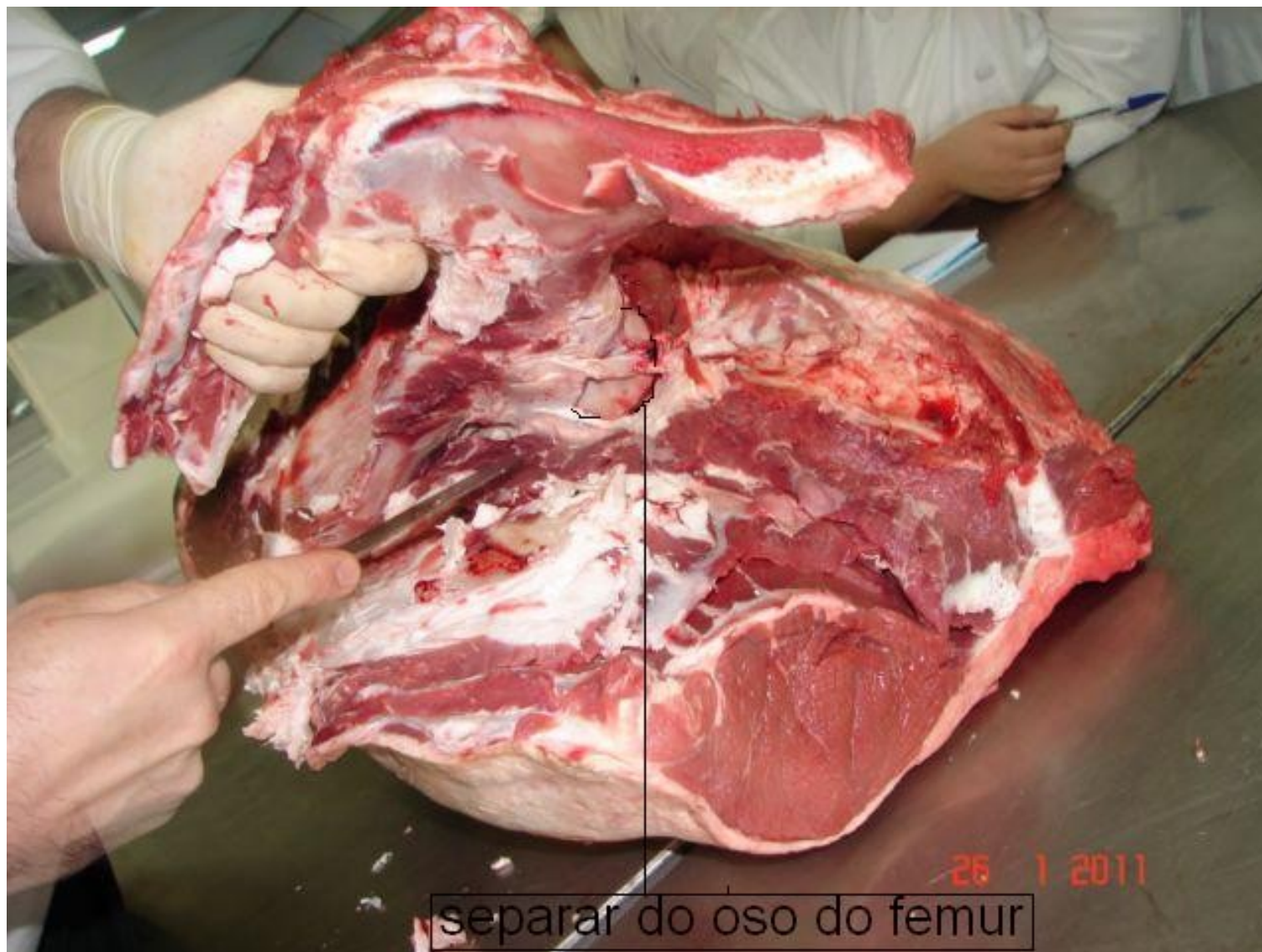




oso da  
cadeira

cadeira

26 1 2011



separar do oso do femur



Oso da cadeira





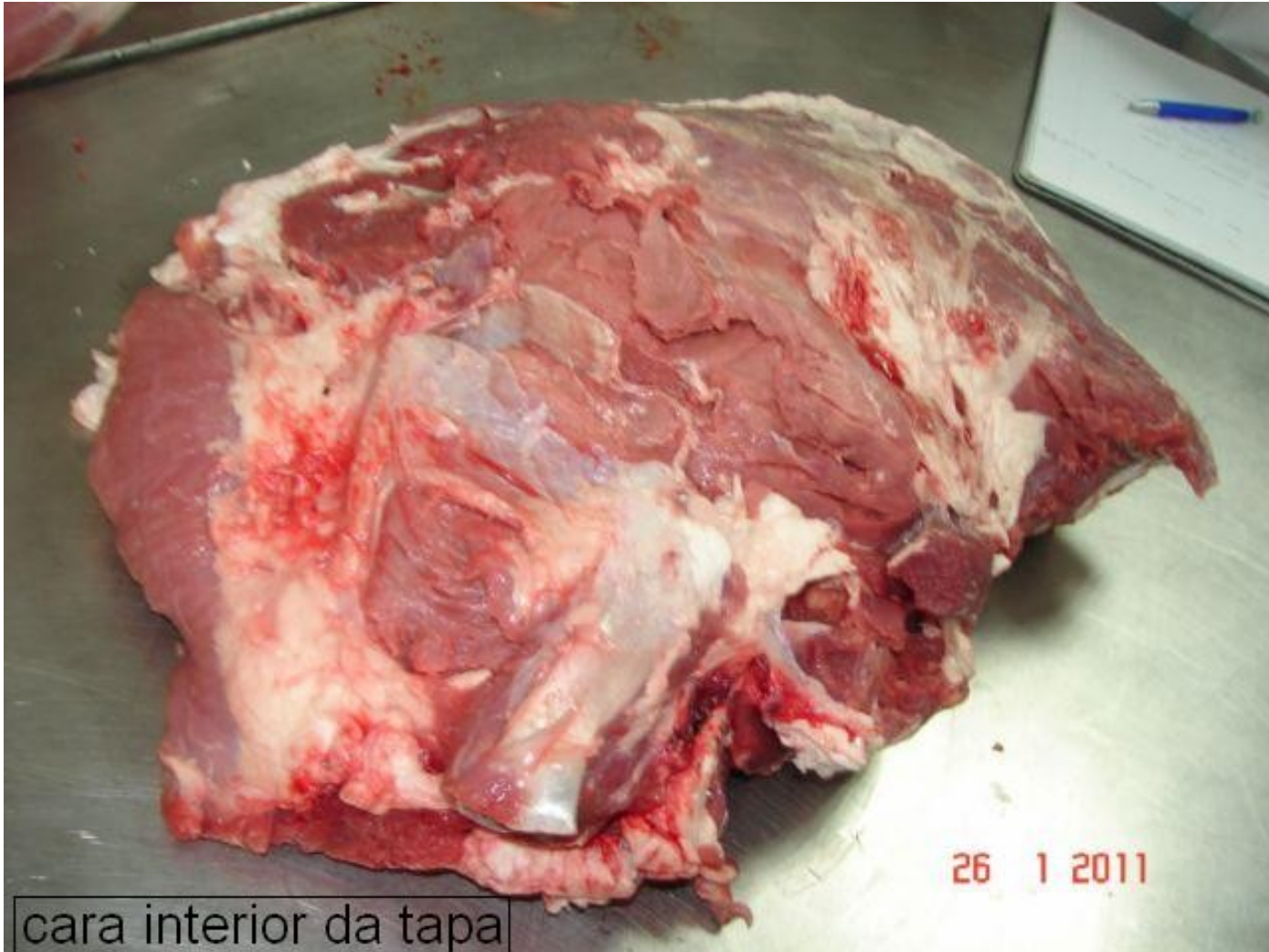
# RETIRAR A TAPA







# TAPA CARA INTERIOR



cara interior da tapa

# TAPA CARA EXTERIOR



# RETIRAR O FEMUR





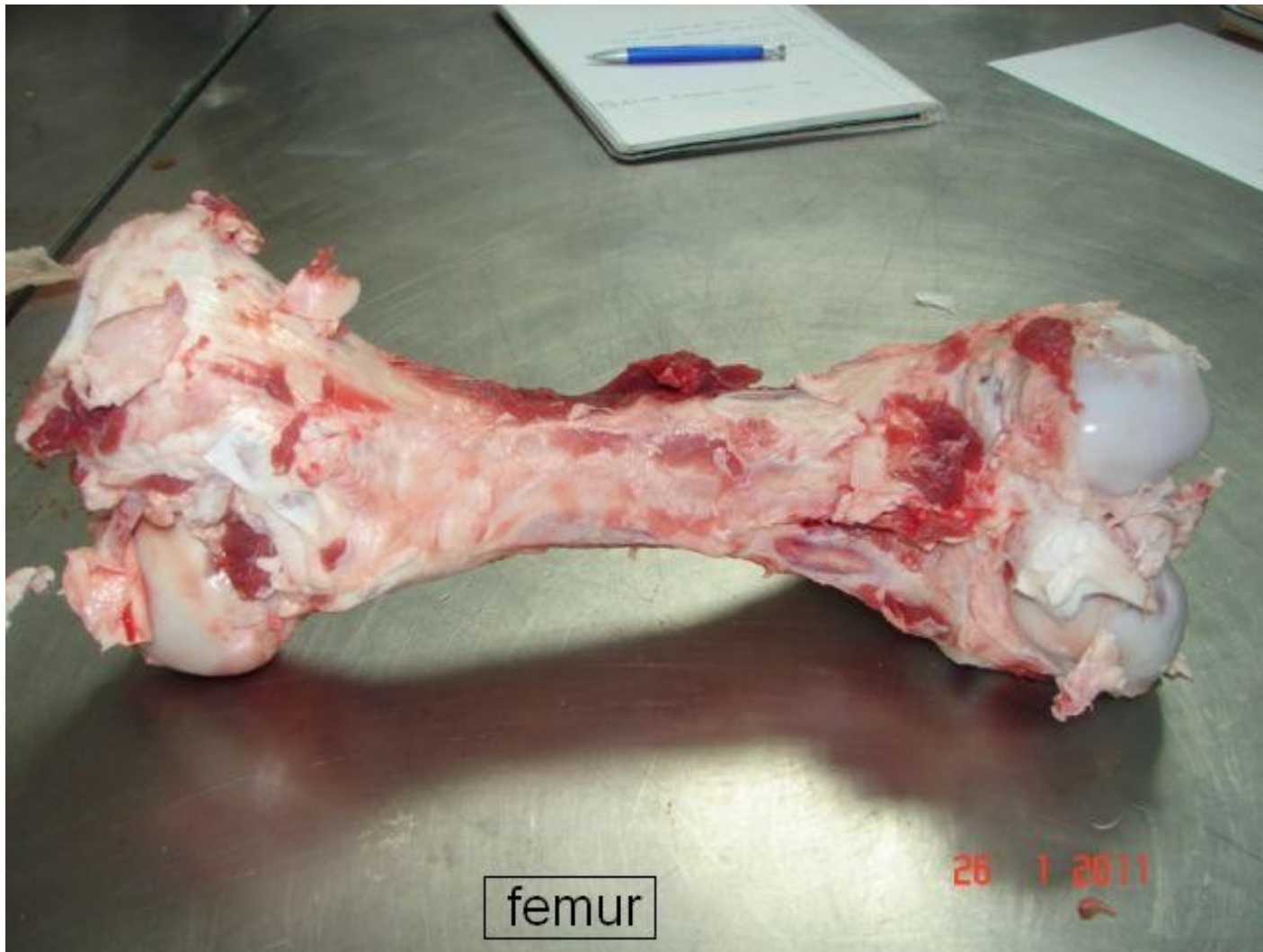
retirar o femur

26 1 2011

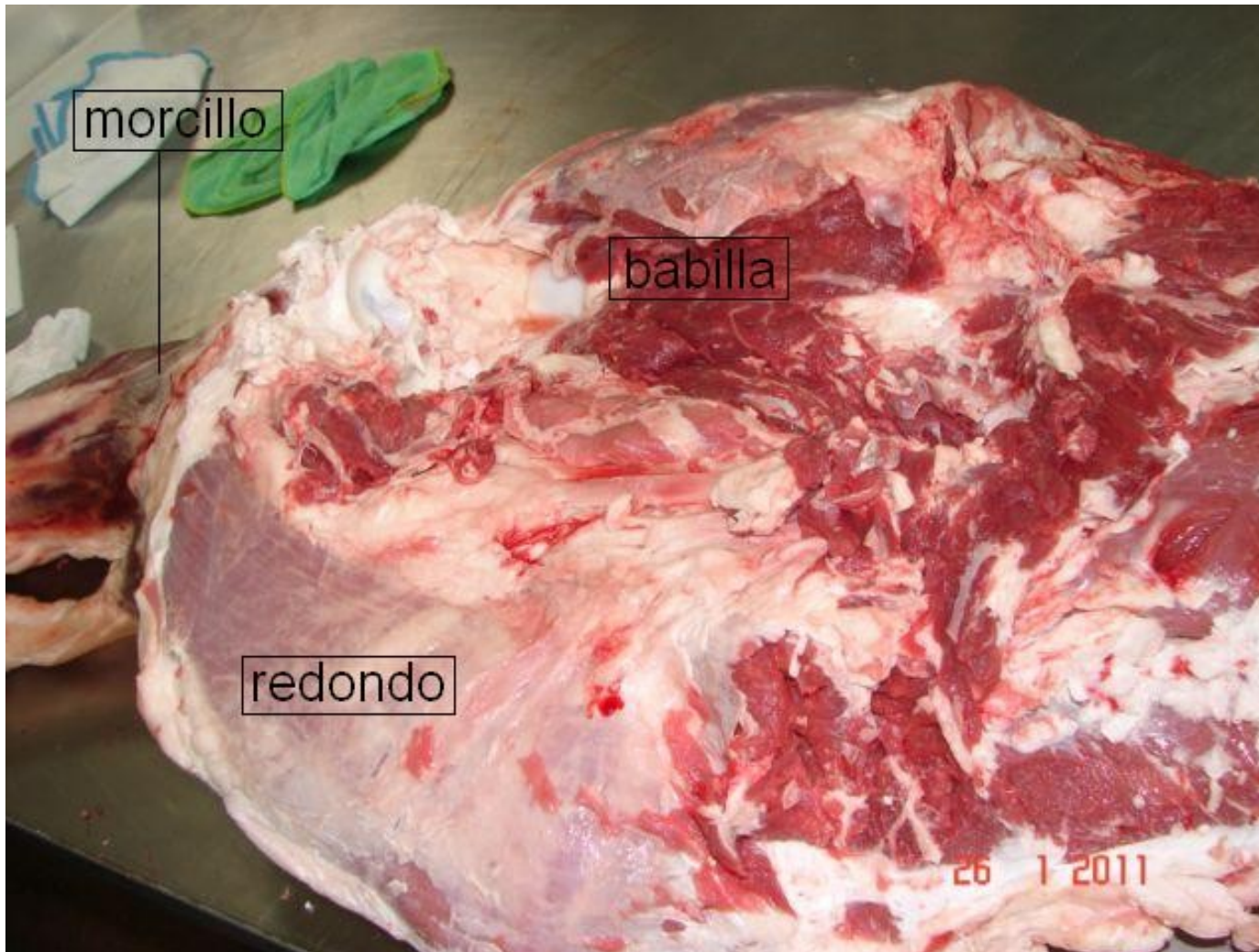




# FEMUR



# RETIRAR MORCILLO/XARRETE



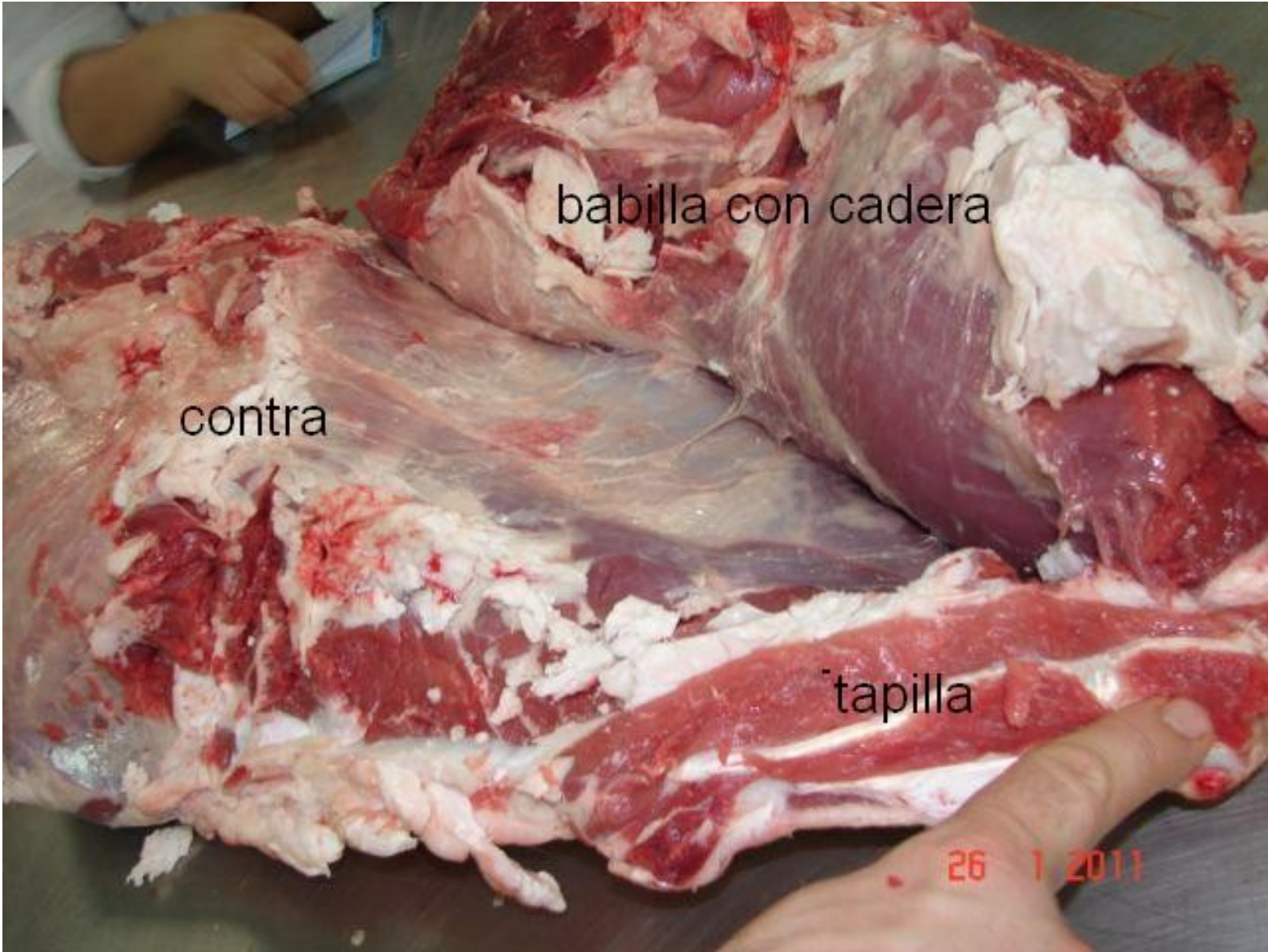
# MORCILLO/XARRETE



# SEPARAR A CONTRA DA BABILLA CON CADERA







babilla con cadera

contra

tapilla

26 1 2011

# CONTRA ENTEIRA





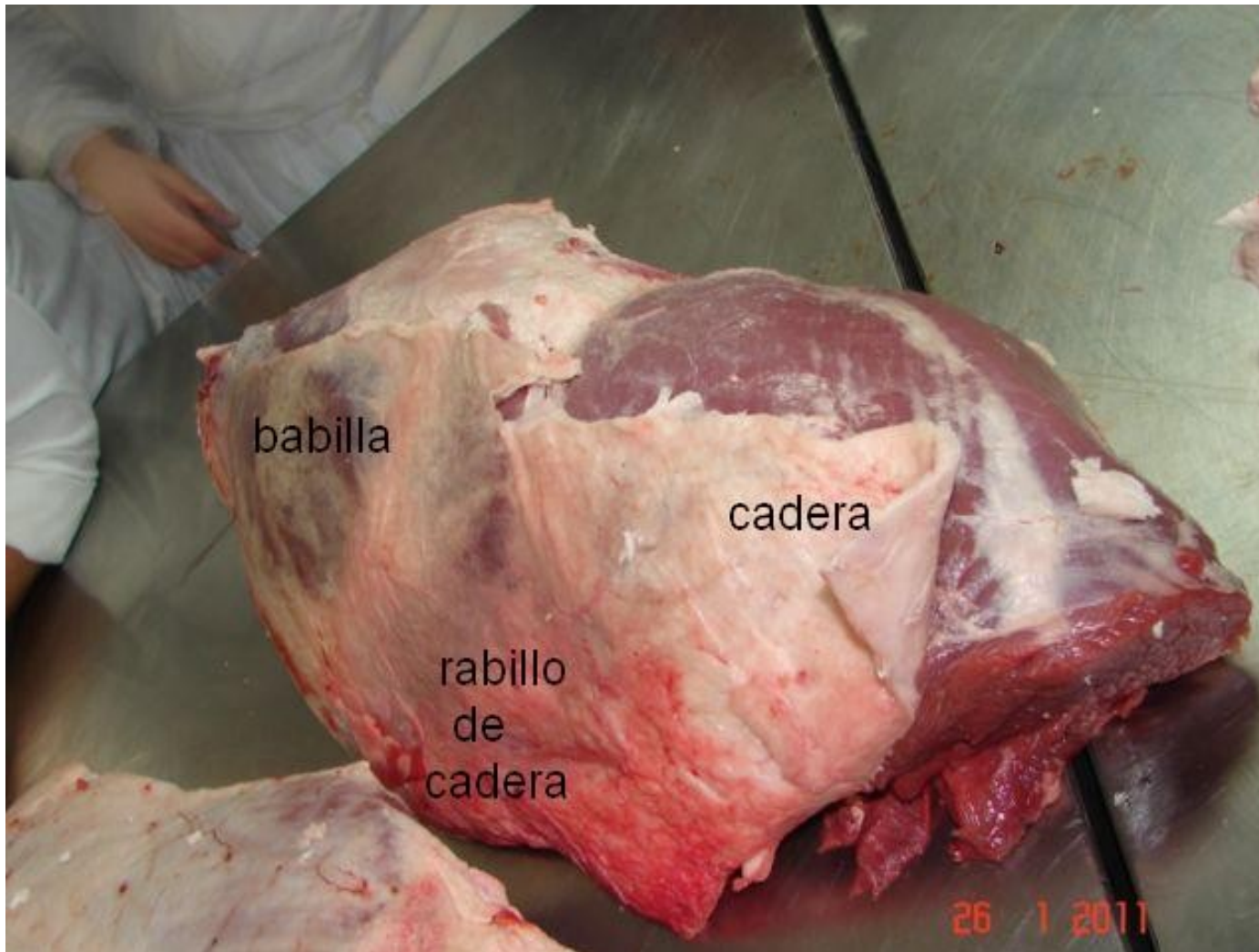
# CONTRA ENTEIRA



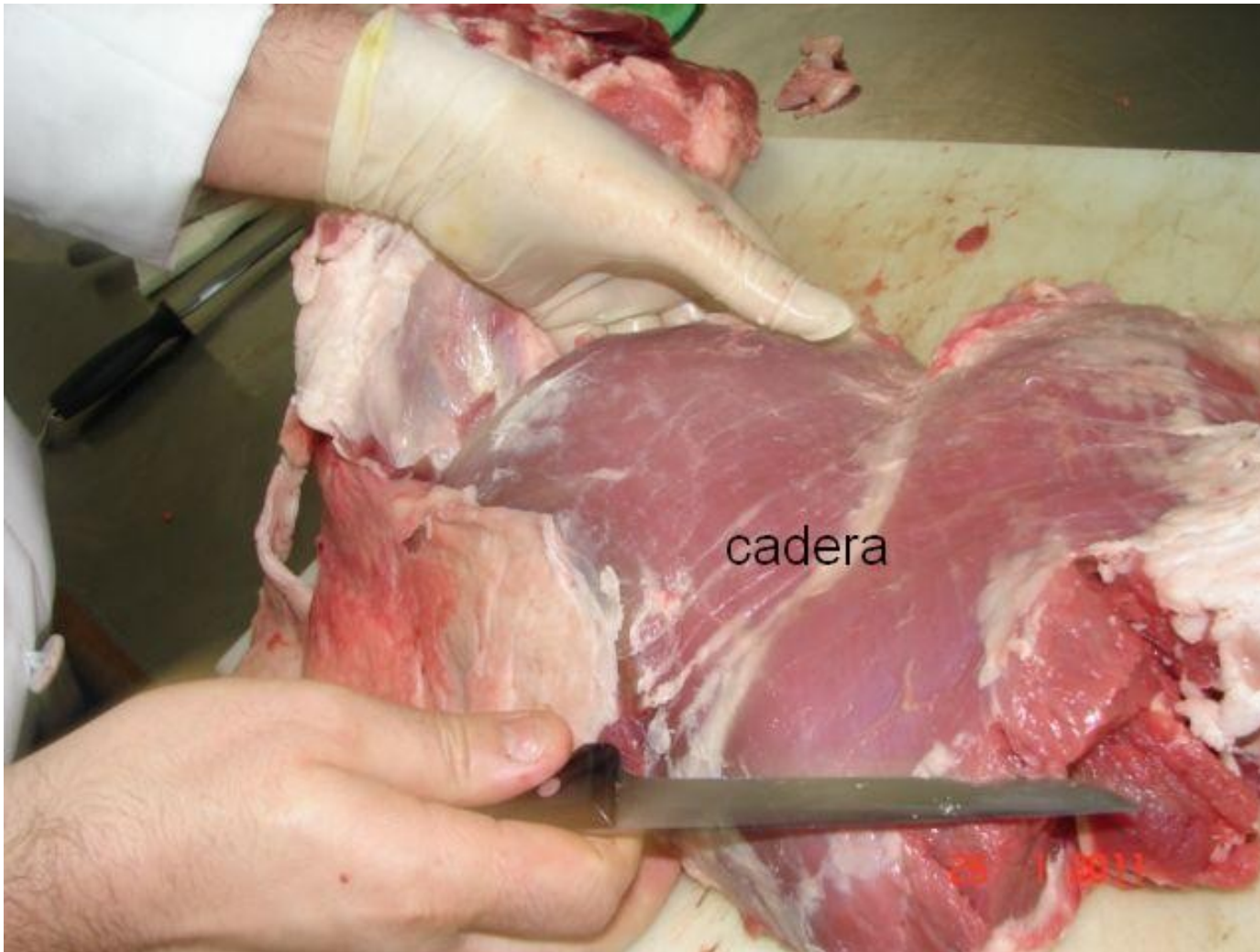
contra cara interior

25 1 2011

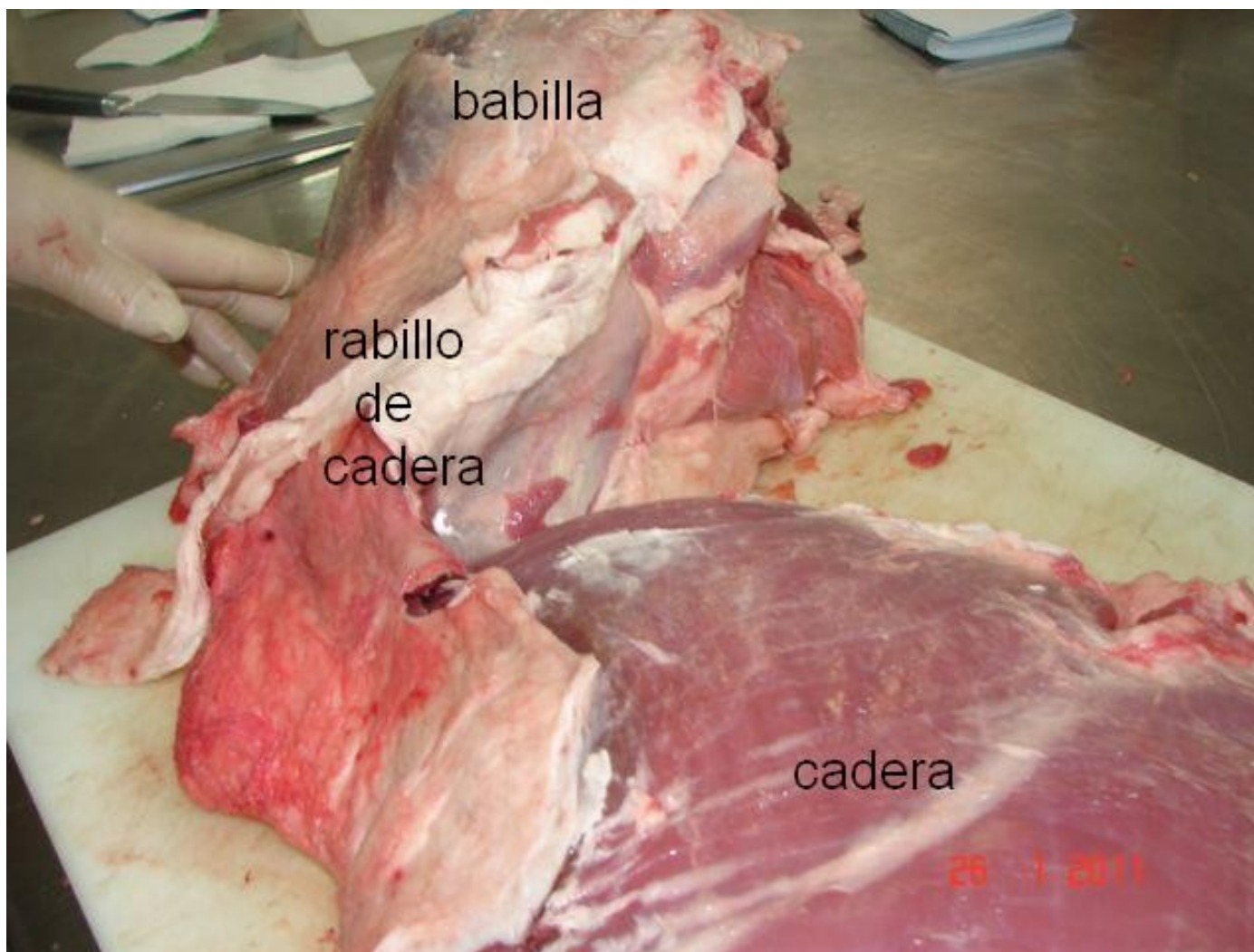
# BABILLA CON CADERA



# SUBDIVISIÓN DA BABILLA CON CADERA



# PEZAS: BABILLA, CADERA e RABILLO DE CADERA



# BABILLA



# CADERA

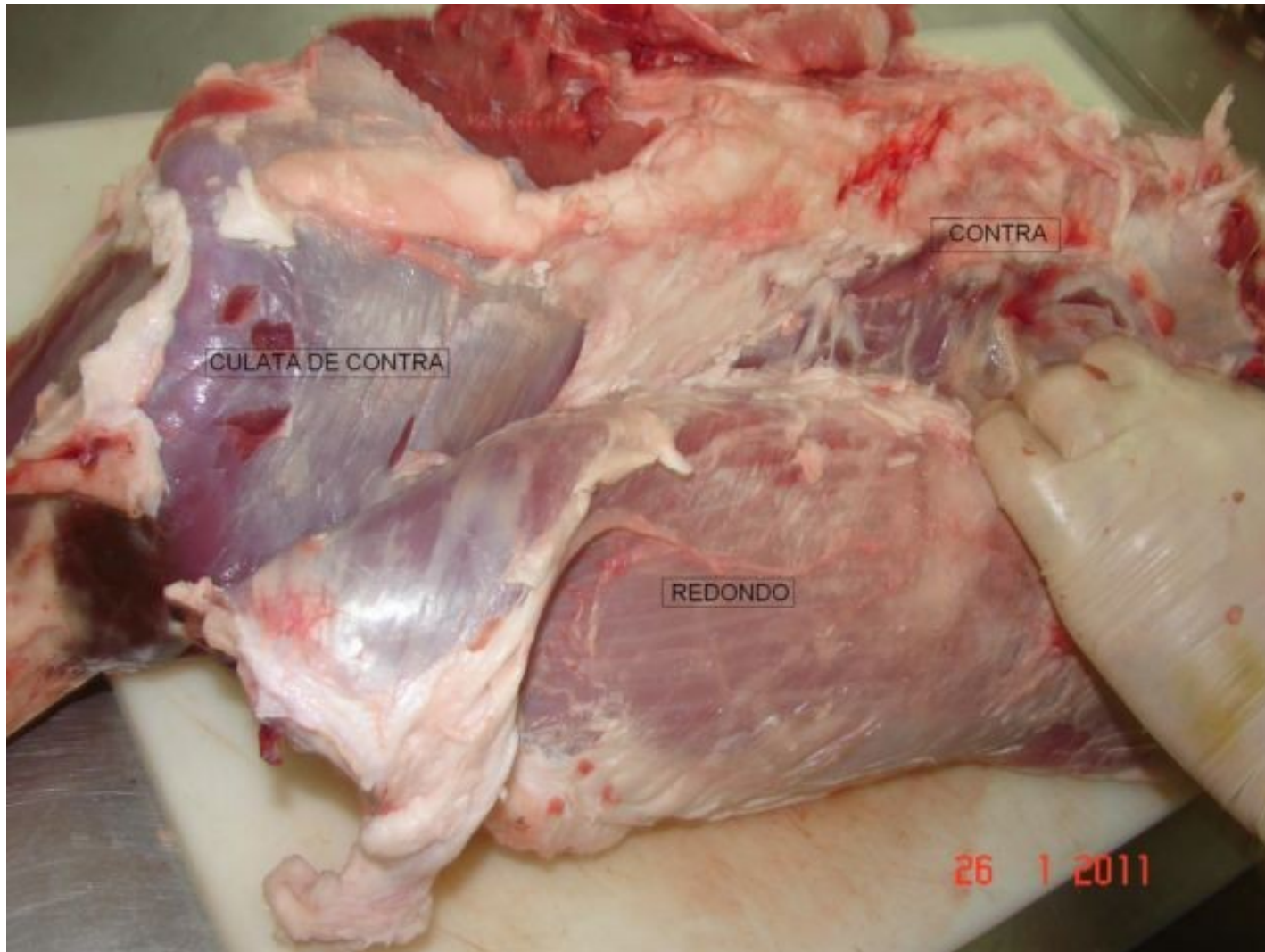


cadere

# RABILLO DE CADERA



# SUBDIVISIÓN DA CONTRA

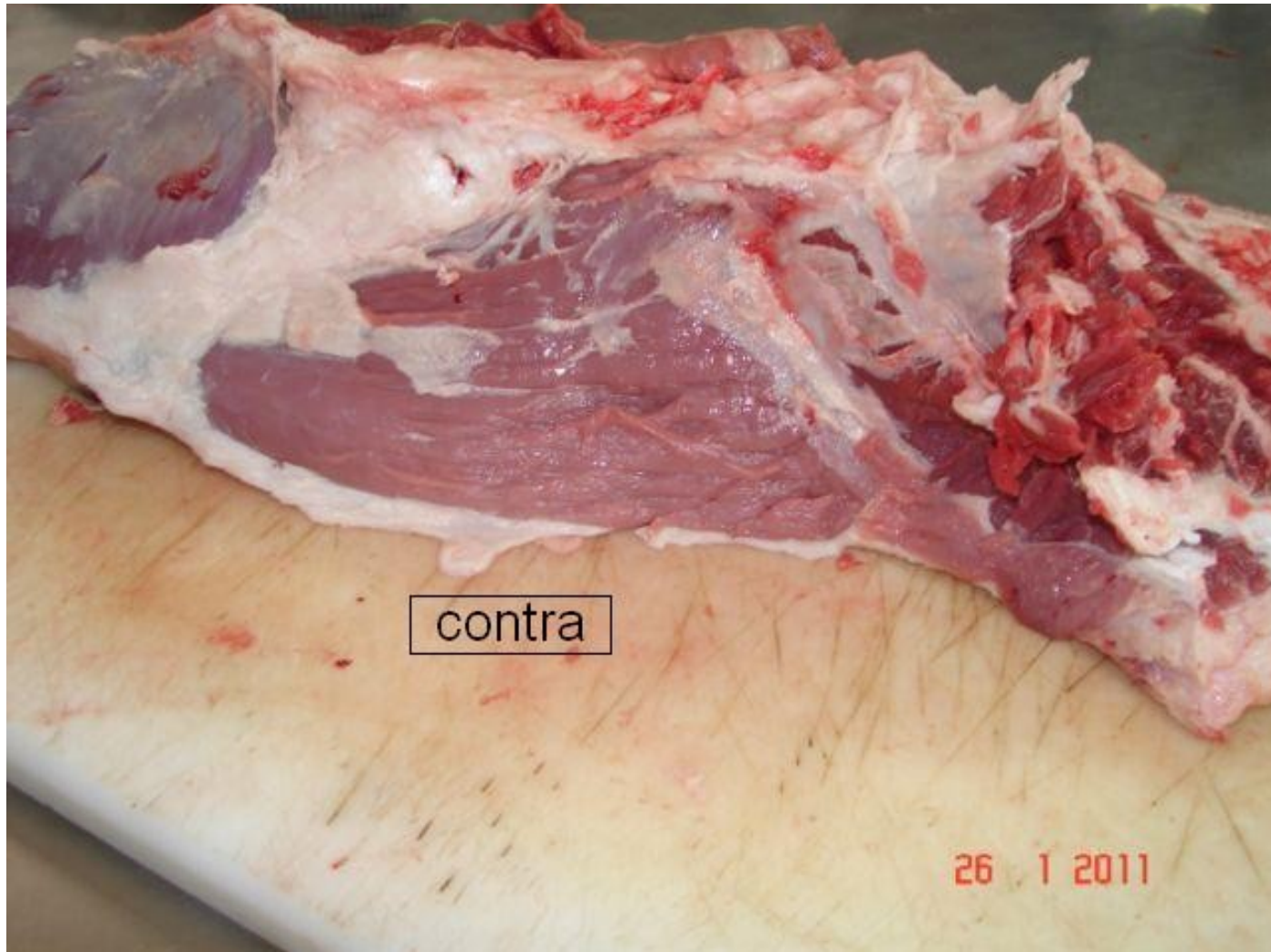




# PEZAS: CONTRA, REDONDO, CULATA DE CONTRA e TAPILLA



# CONTRA



contra

26 1 2011

# REDONDO

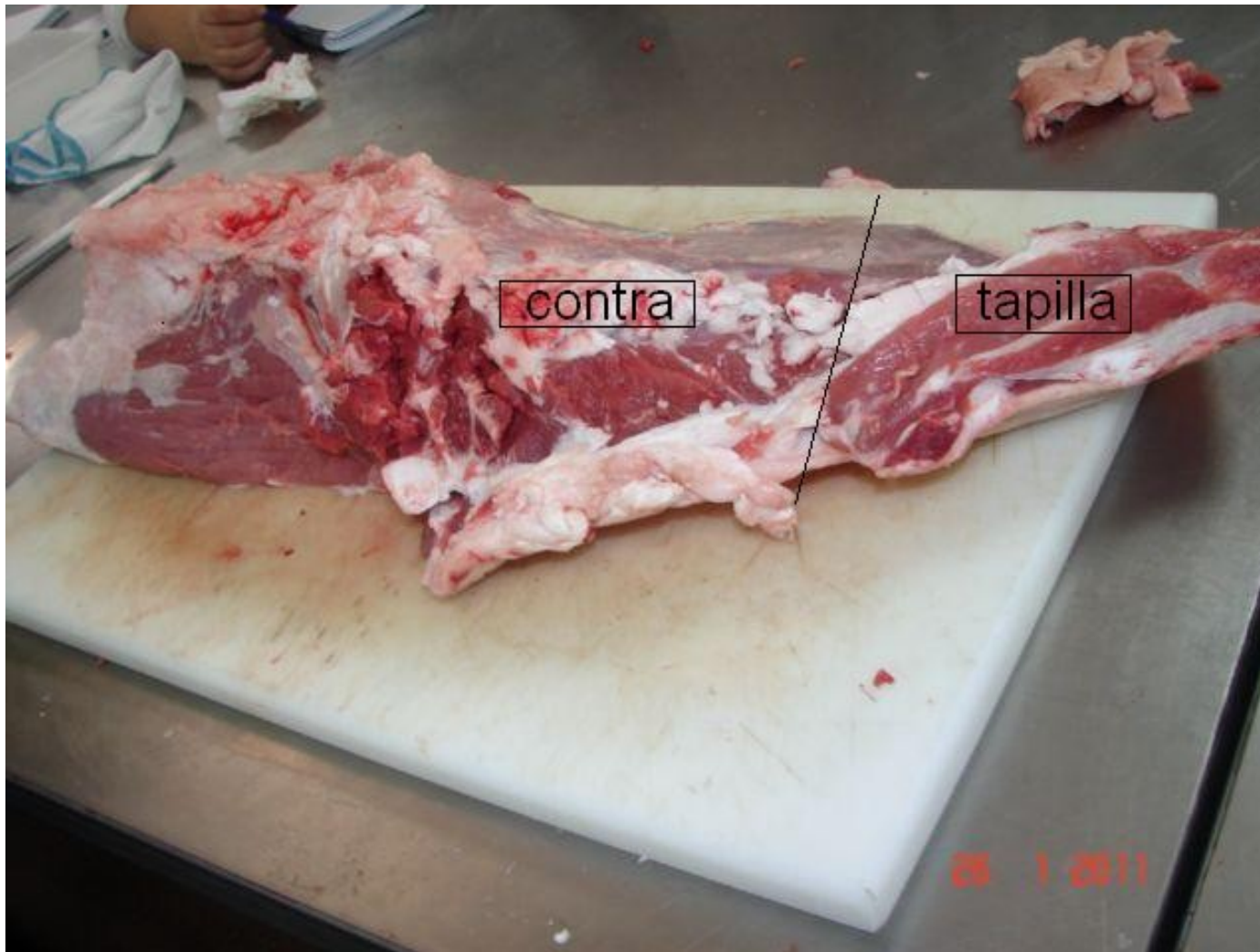


redondo

# CULATA DE CONTRA

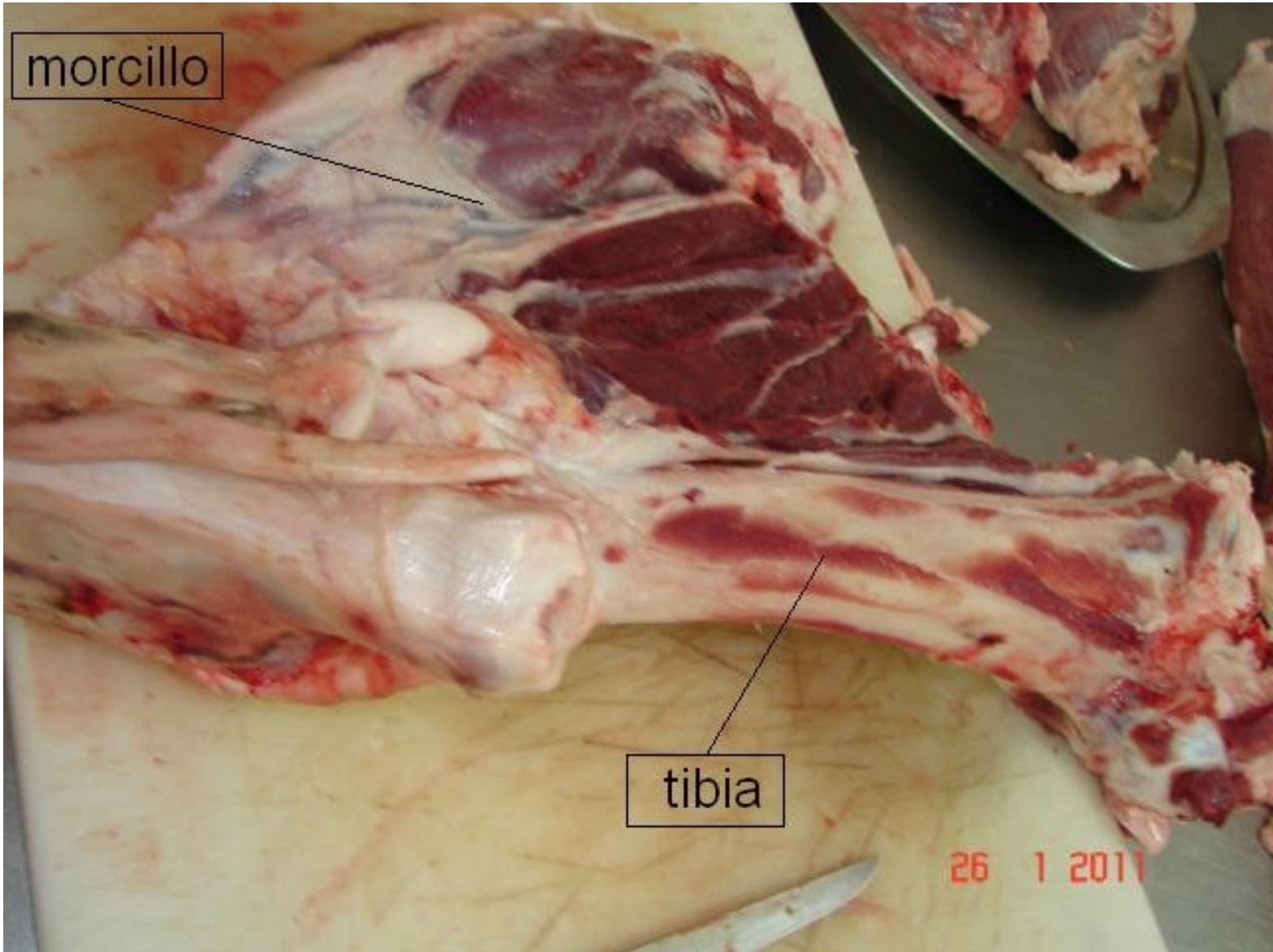


# TAPILLA

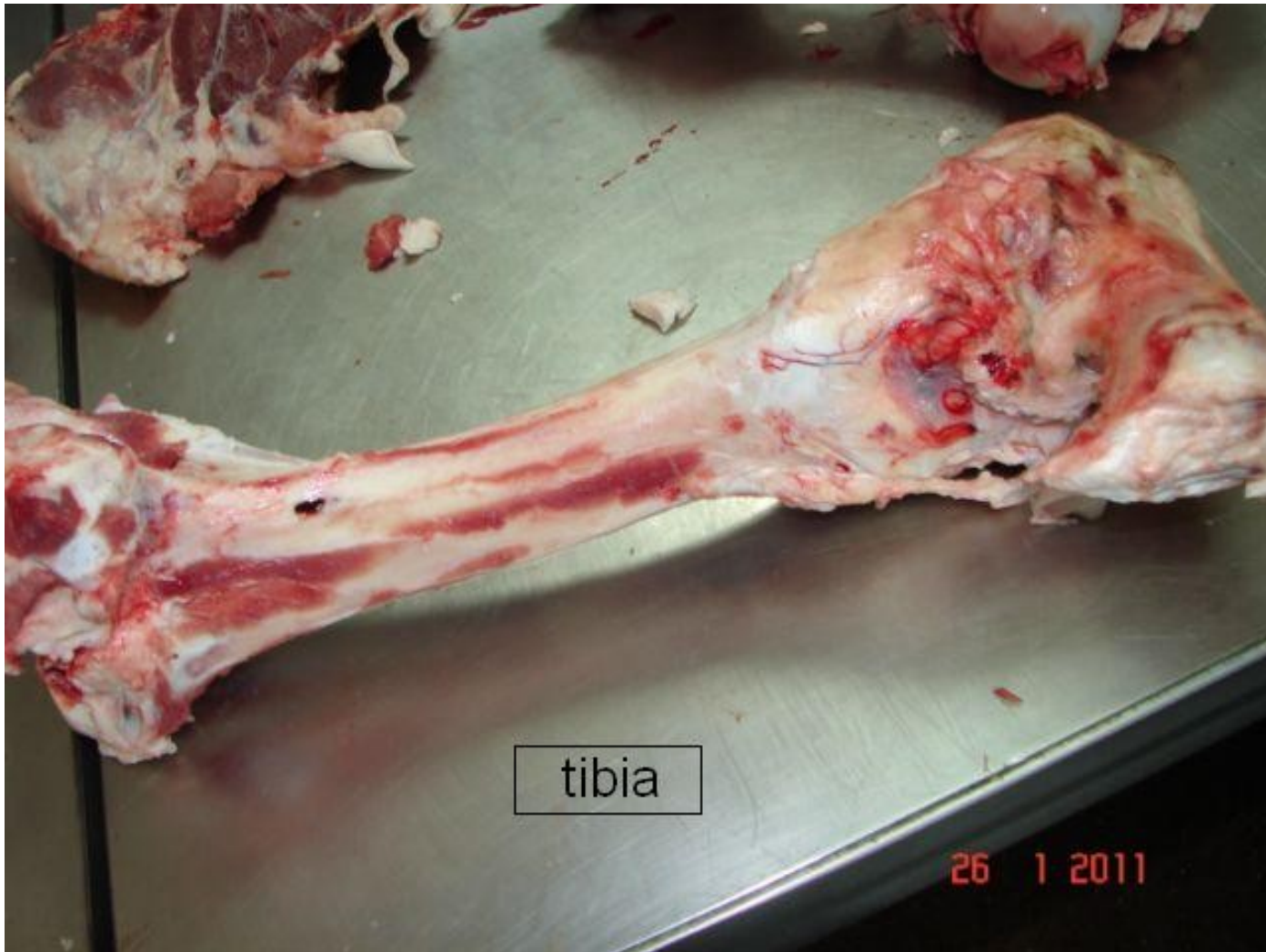


# DESOSAR MORCILLO/XARRETE





# TIBIA

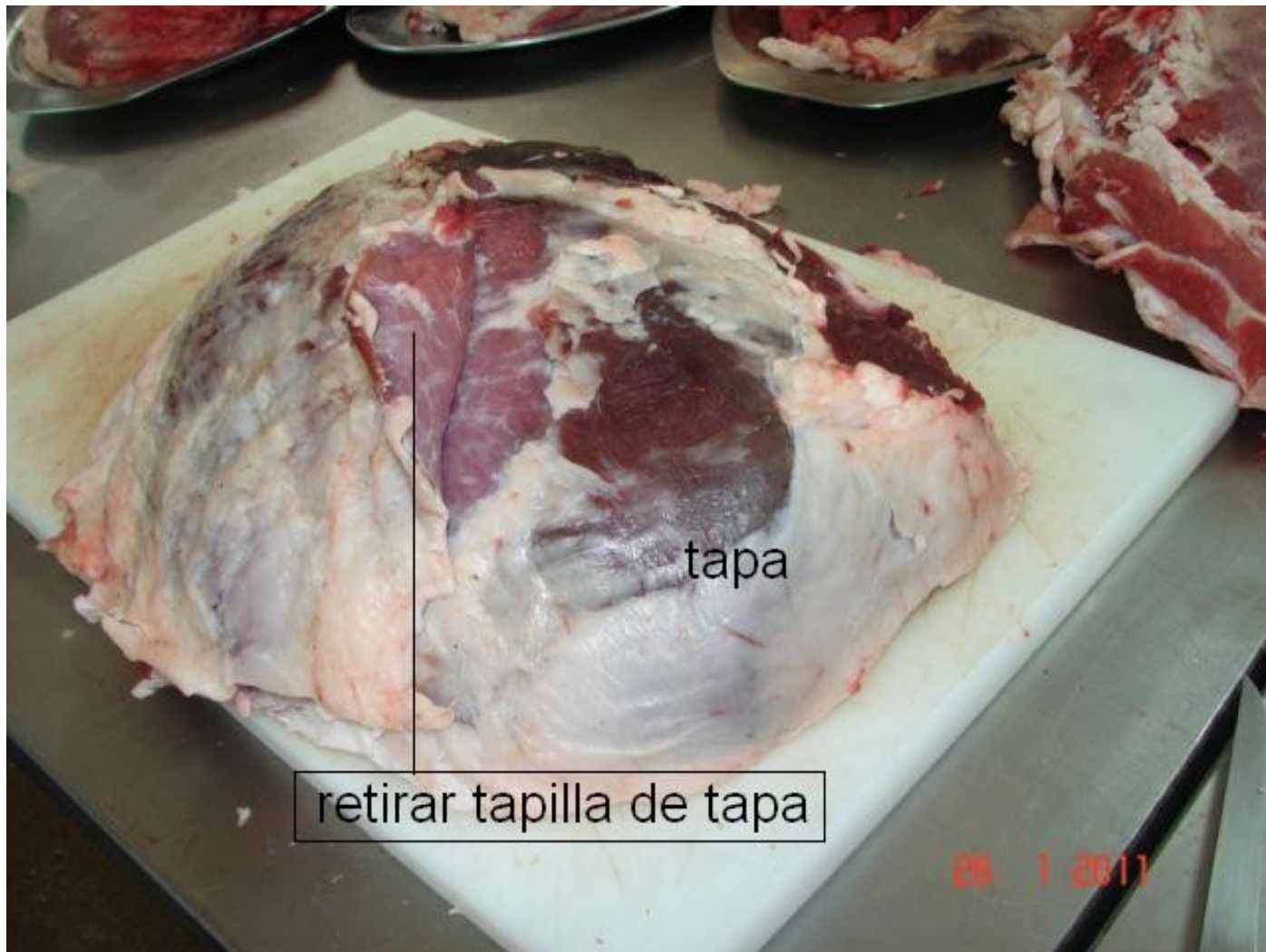




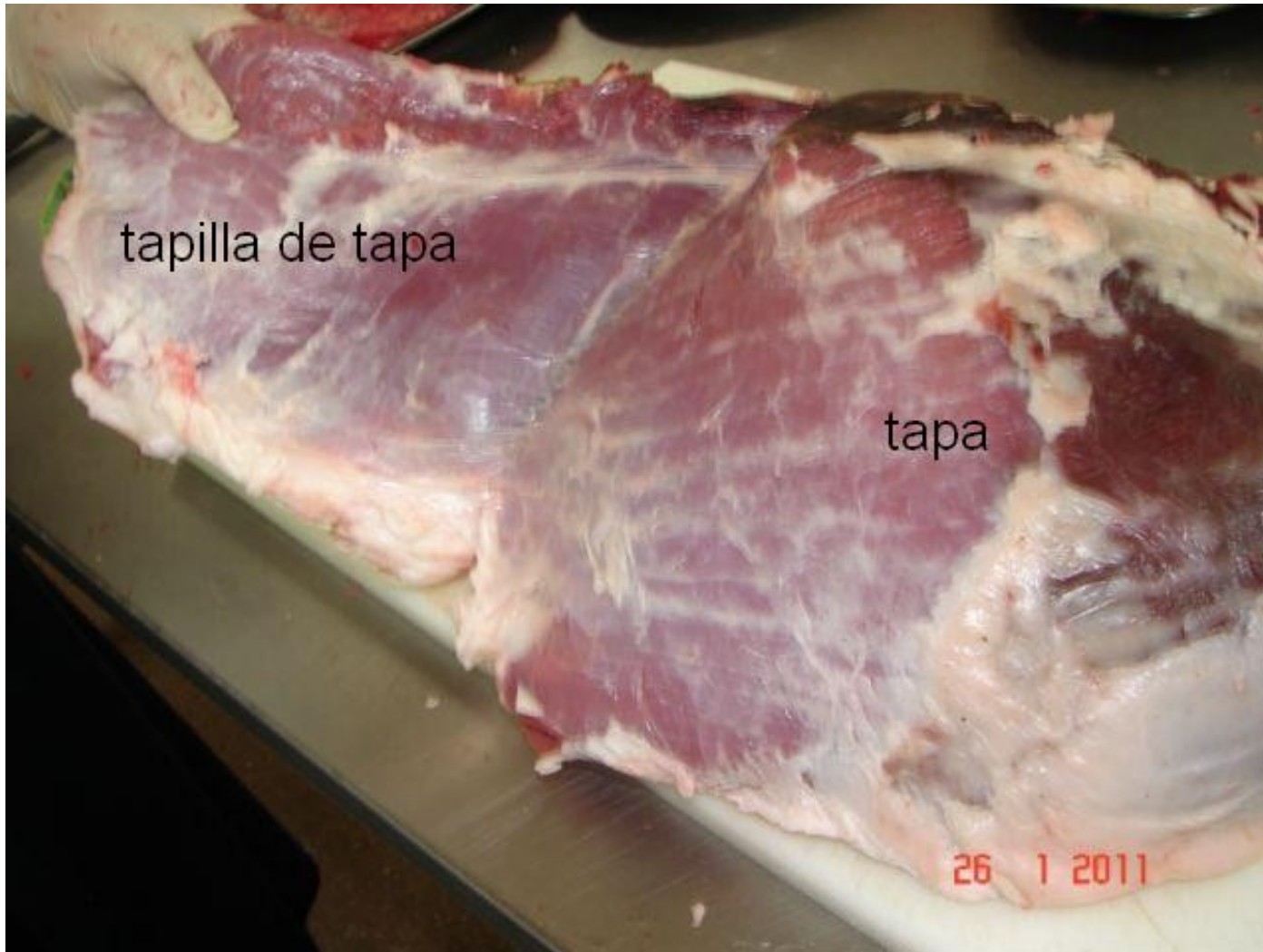
# MORCILLO DESOSADO



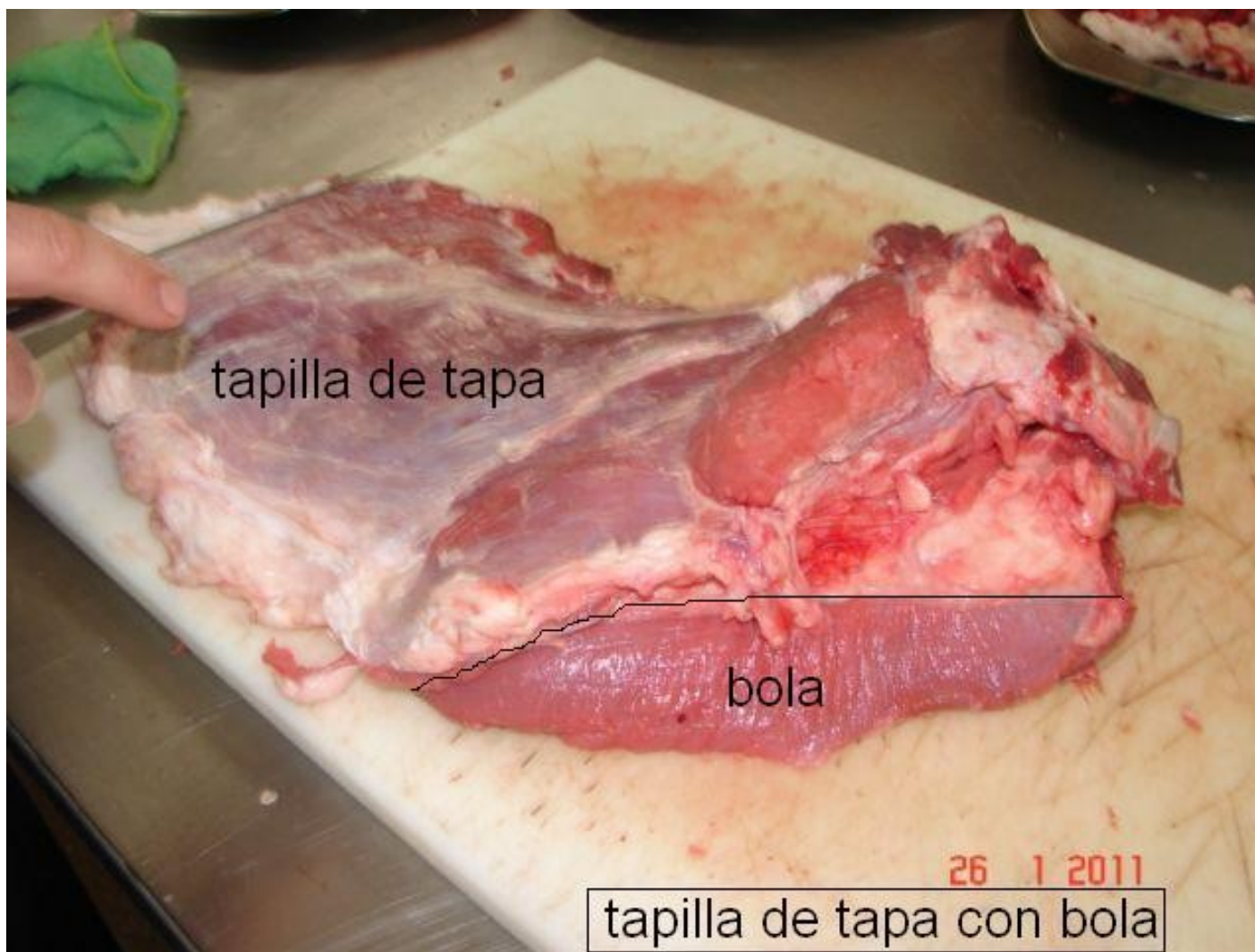
# SUBDIVISIÓN DA TAPA

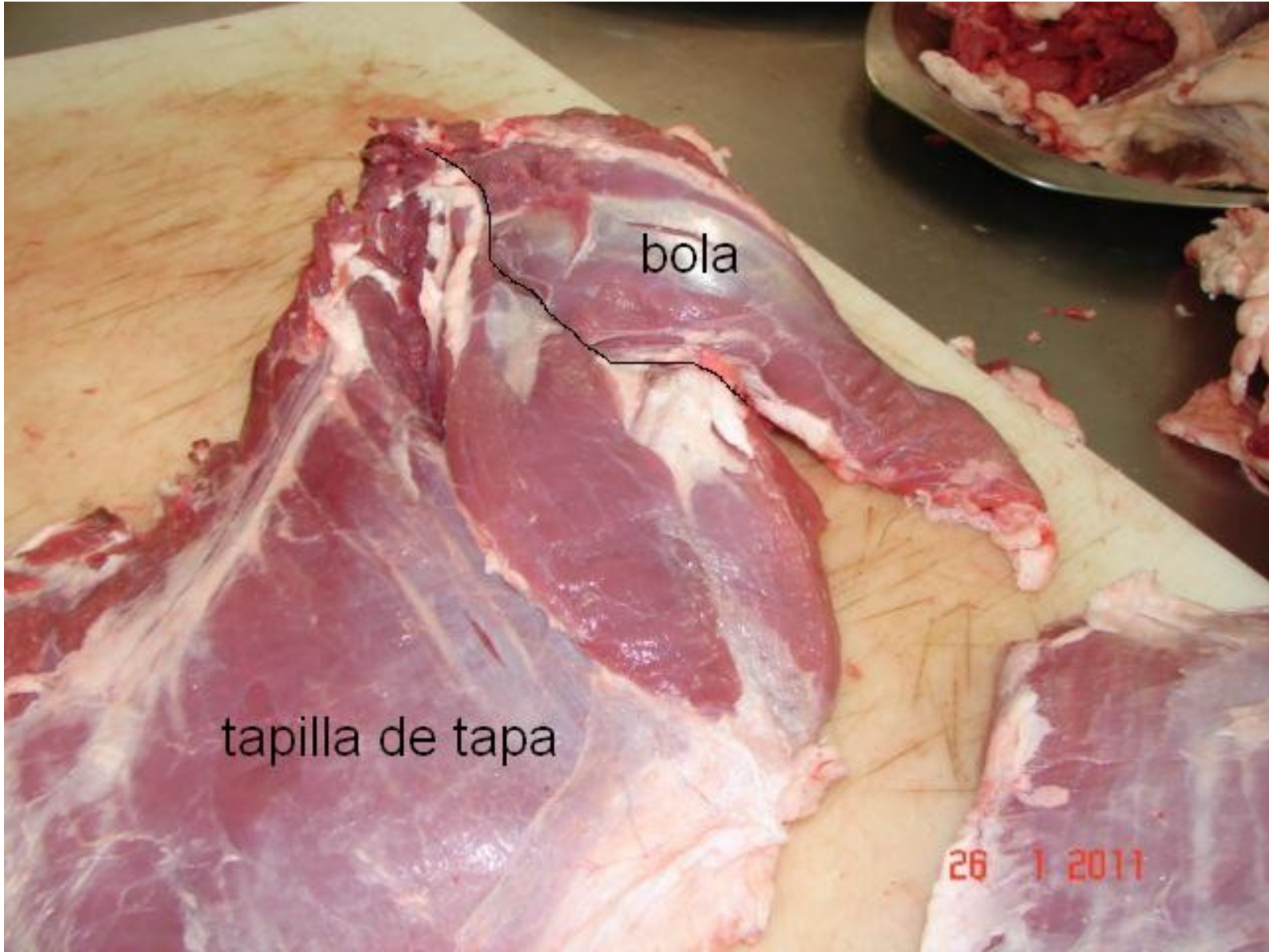


# PEZAS: TAPA, TAPILLA DE TAPA e BOLA



# TAPILLA DE TAPA CON BOLA





bola

tapilla de tapa

26 1 2011



bola

26 1 2011